

Western Corn Belt Lean Value Direct Hog Trade Basis

Published March 8, 2002

Table of Contents

Page 2.	CME February & April 49-50% Lean, 170-191 Lb. Carcass Basis
Page 3.	CME June & July 49-50% Lean, 170-191 Lb. Carcass Basis
Page 4.	CME August & October 49-50% Lean, 170-191 Lb. Carcass Basis
Page 5.	CME December 49-50% Lean, 170-191 Lb. Carcass Basis & CME February 51-52% Lean, 170-191 Lb. Carcass Basis
Page 6.	CME April & June 51-52% Lean, 170-191 Lb. Carcass Basis
Page 7.	CME July & August 51-52% Lean, 170-191 Lb. Carcass Basis
Page 8.	CME October & December 51-52% Lean, 170-191 Lb. Carcass Basis
Page 9.	CME February & April 53-54% Lean, 170-191 Lb. Carcass Basis
Page 10.	CME June & July 53-54% Lean, 170-191 Lb. Carcass Basis
Page 11.	CME August & October 53-54% Lean, 170-191 Lb. Carcass Basis
Page 12.	CME December 53-54% Lean, 170-191 Lb. Carcass Basis

Western Corn Belt Lean Value Direct Hog Trade Basis is published by K-State Research & Extension and the K-State Livestock and Meat Marketing Group in the Department of Agricultural Economics at Kansas State University, 218 Waters Hall, Manhattan, KS 66506.

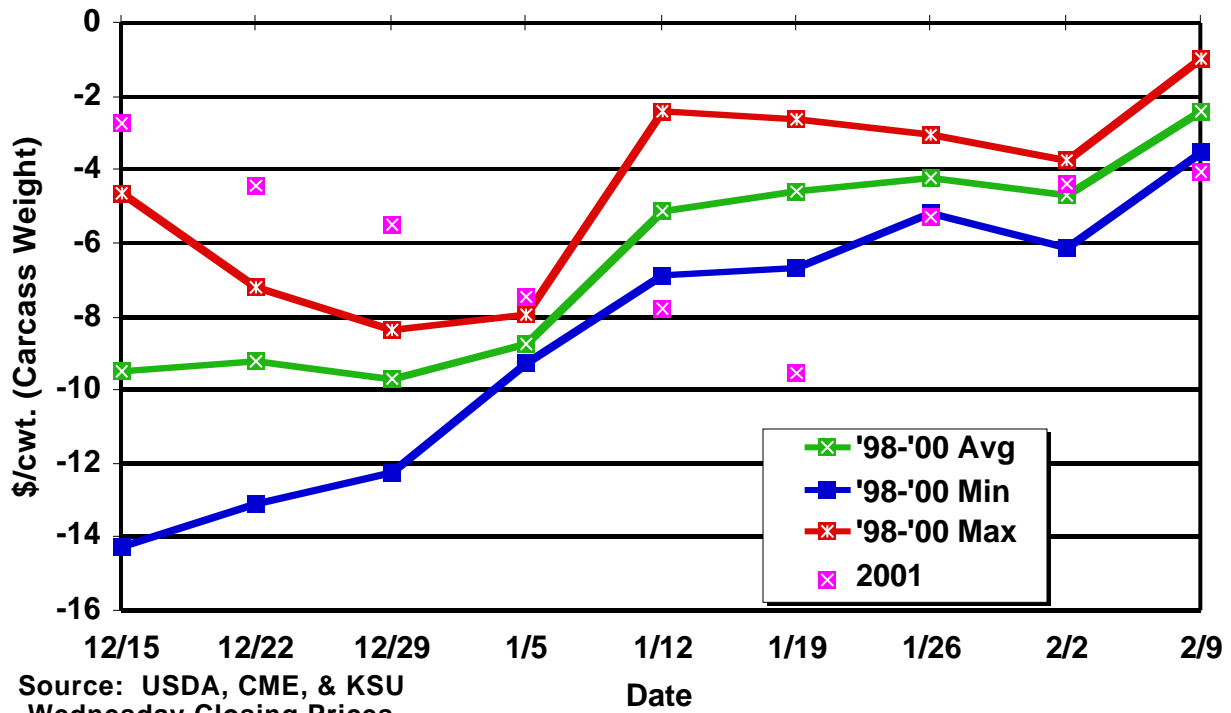
Editor: James Mintert, Professor of Agricultural Economics.

Western Corn Belt Lean Value Direct Hog Trade Basis is available on the World Wide Web at
<http://www.agecon.ksu.edu/livestock>

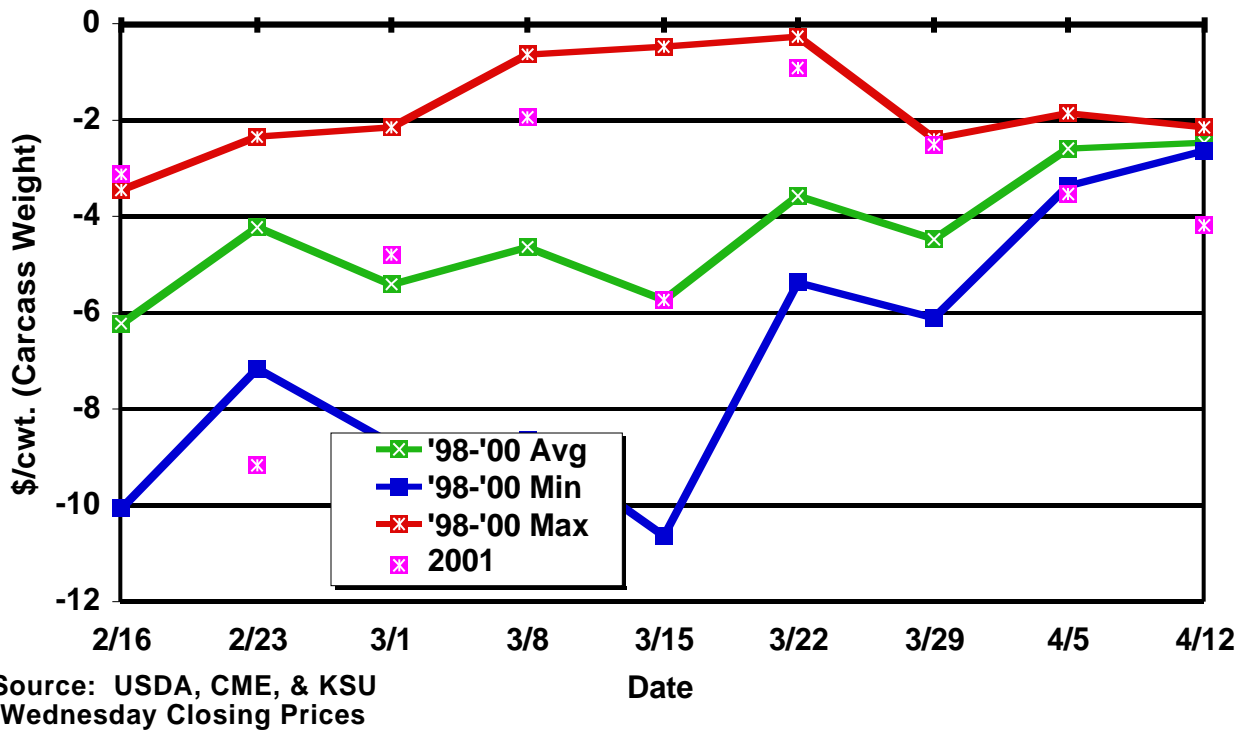
Phone: 785-532-1518

Fax: 785-532-6925

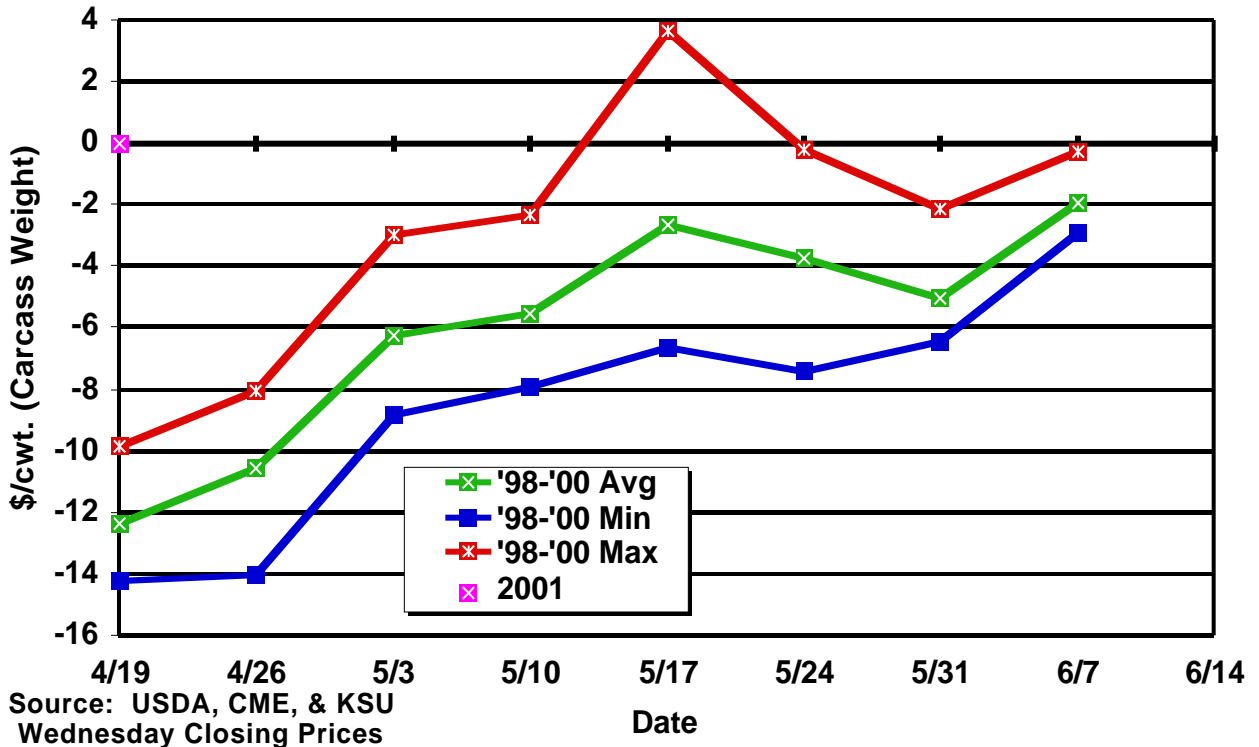
February CME Lean Hog Basis Western Corn Belt 49-50% Lean, 170-191 Lb. Carcass



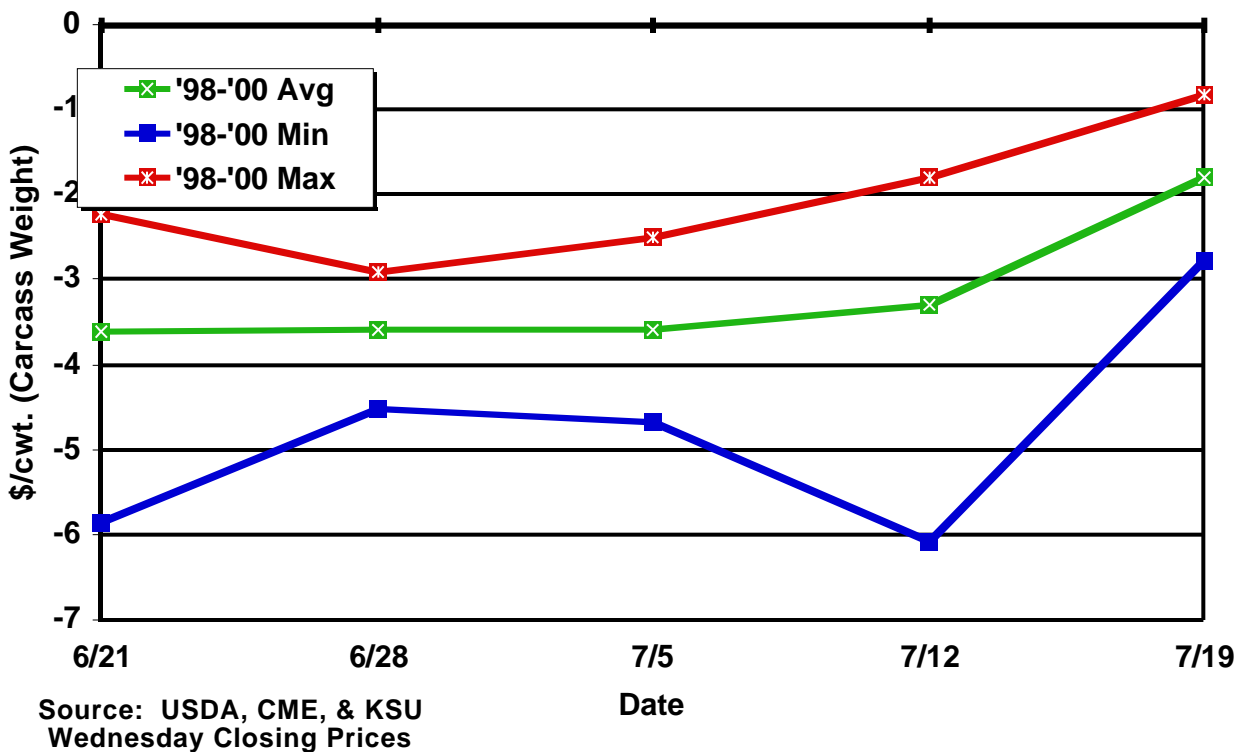
April CME Lean Hog Basis Western Corn Belt 49-50% Lean, 170-191 Lb. Carcass



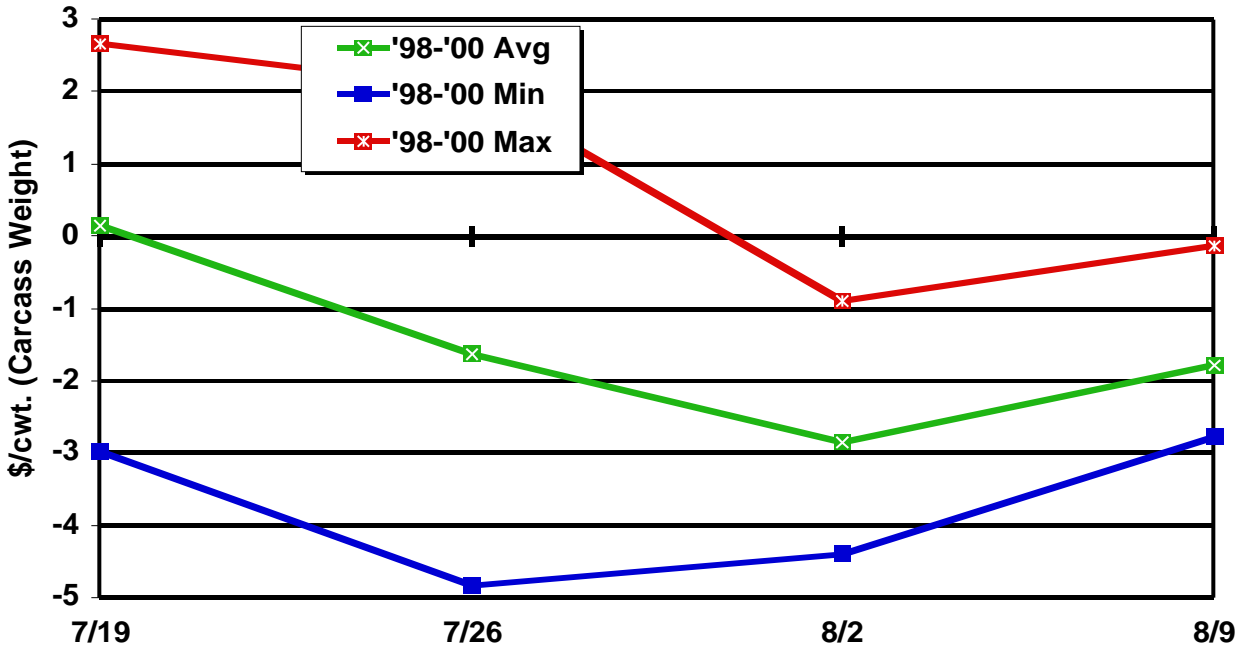
June CME Lean Hog Basis Western Corn Belt 49-50% Lean, 170-191 Lb. Carcass



July CME Lean Hog Basis Western Corn Belt 49-50% Lean, 170-191 Lb. Carcass



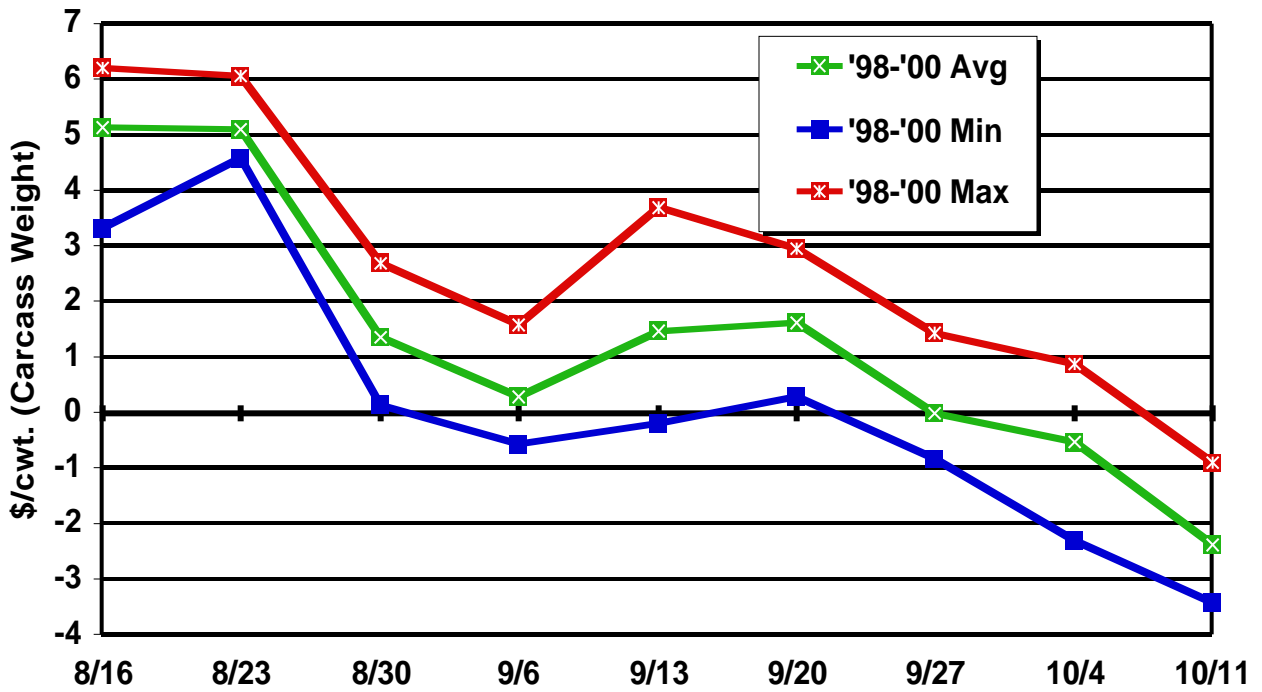
August CME Lean Hog Basis Western Corn Belt 49-50% Lean, 170-191 Lb. Carcass



Source: USDA, CME, & KSU
Wednesday Closing Prices

Date

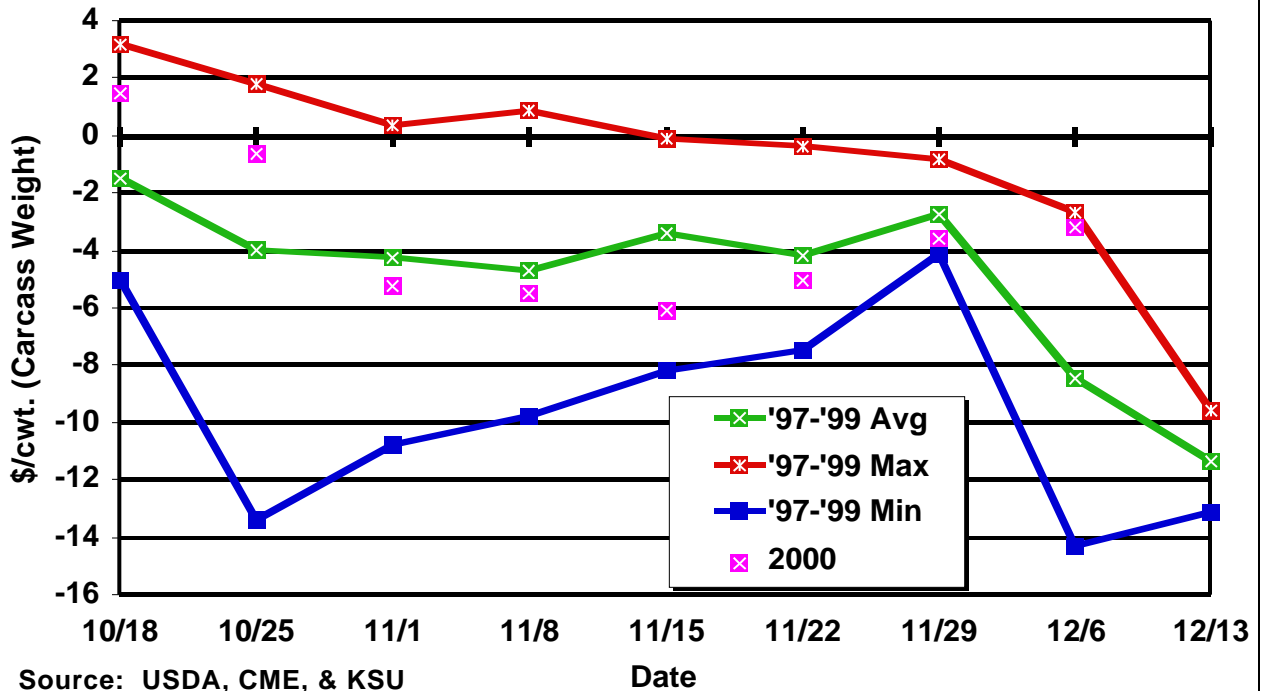
October CME Lean Hog Basis Western Corn Belt 49-50% Lean, 170-191 Lb. Carcass



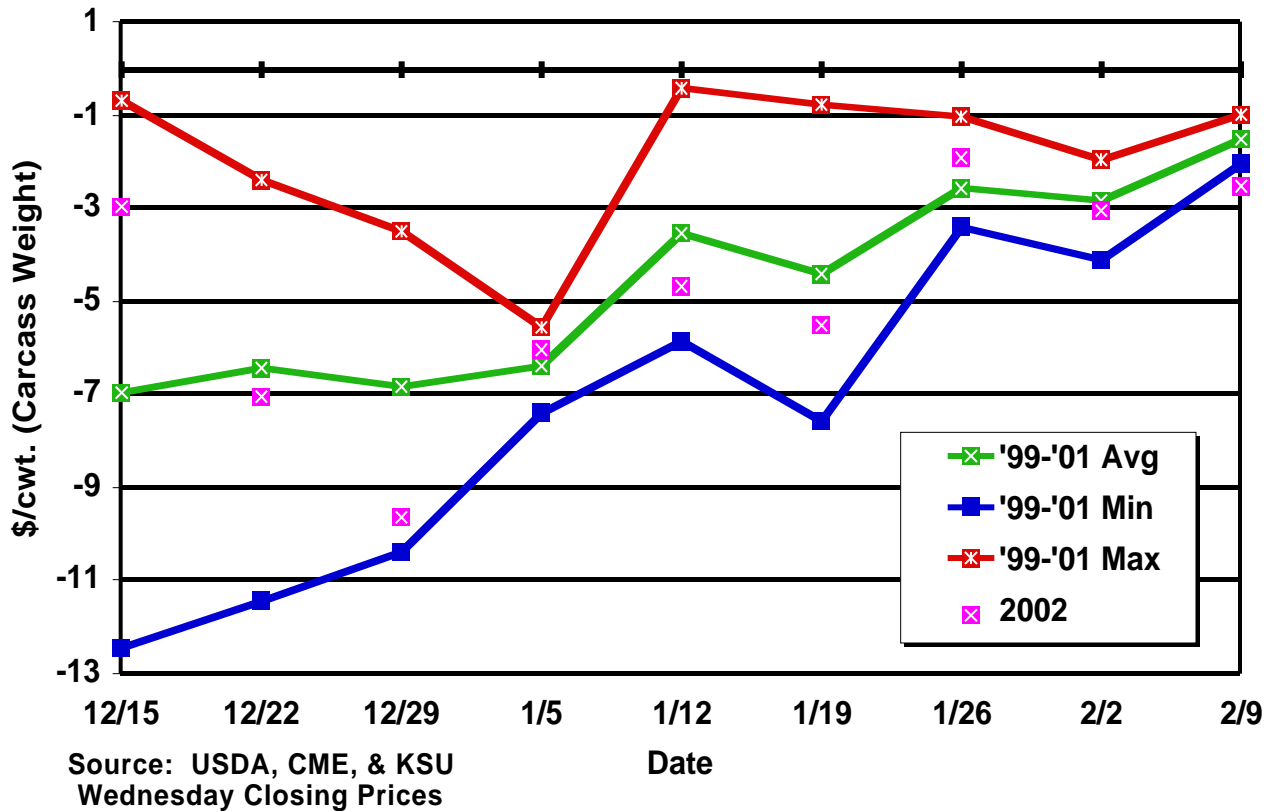
Source: USDA, CME, & KSU
Wednesday Closing Prices

Date

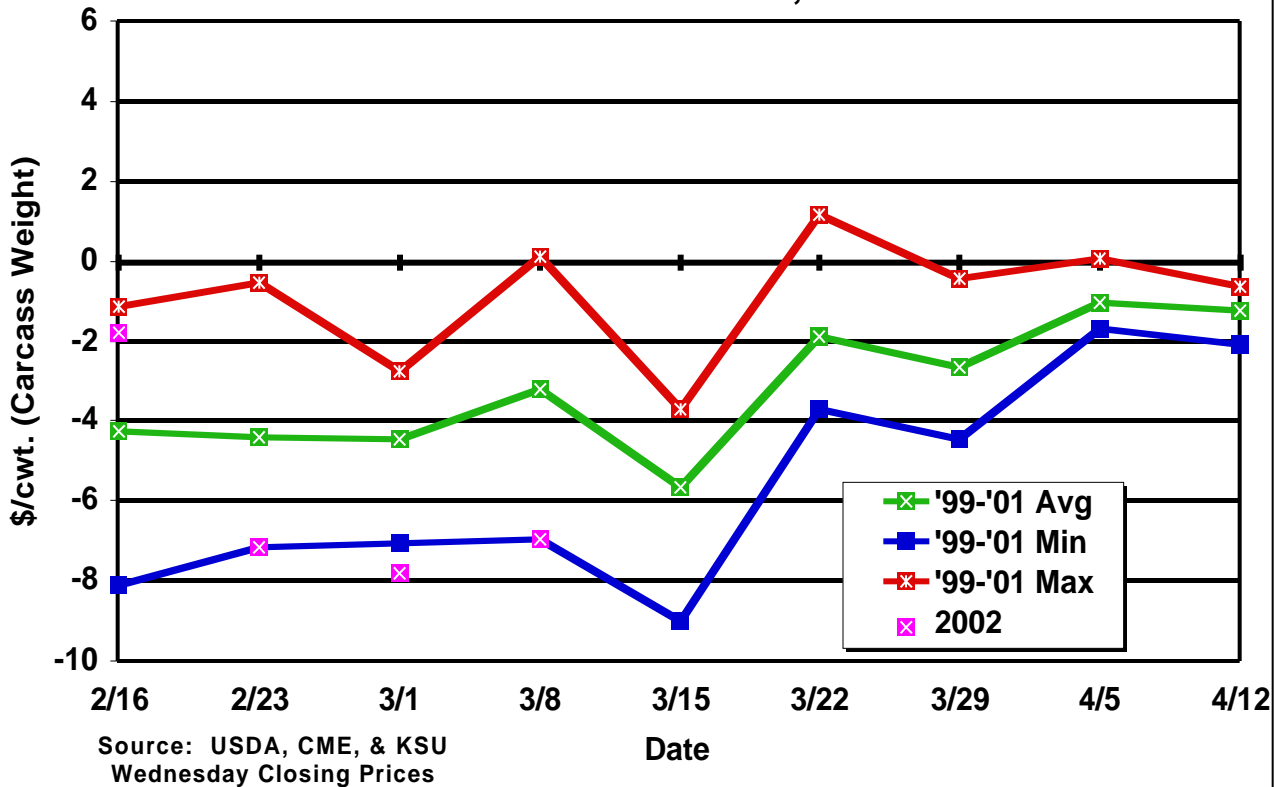
December CME Lean Hog Basis Western Corn Belt 49-50% Lean, 170-191 Lb. Carcass



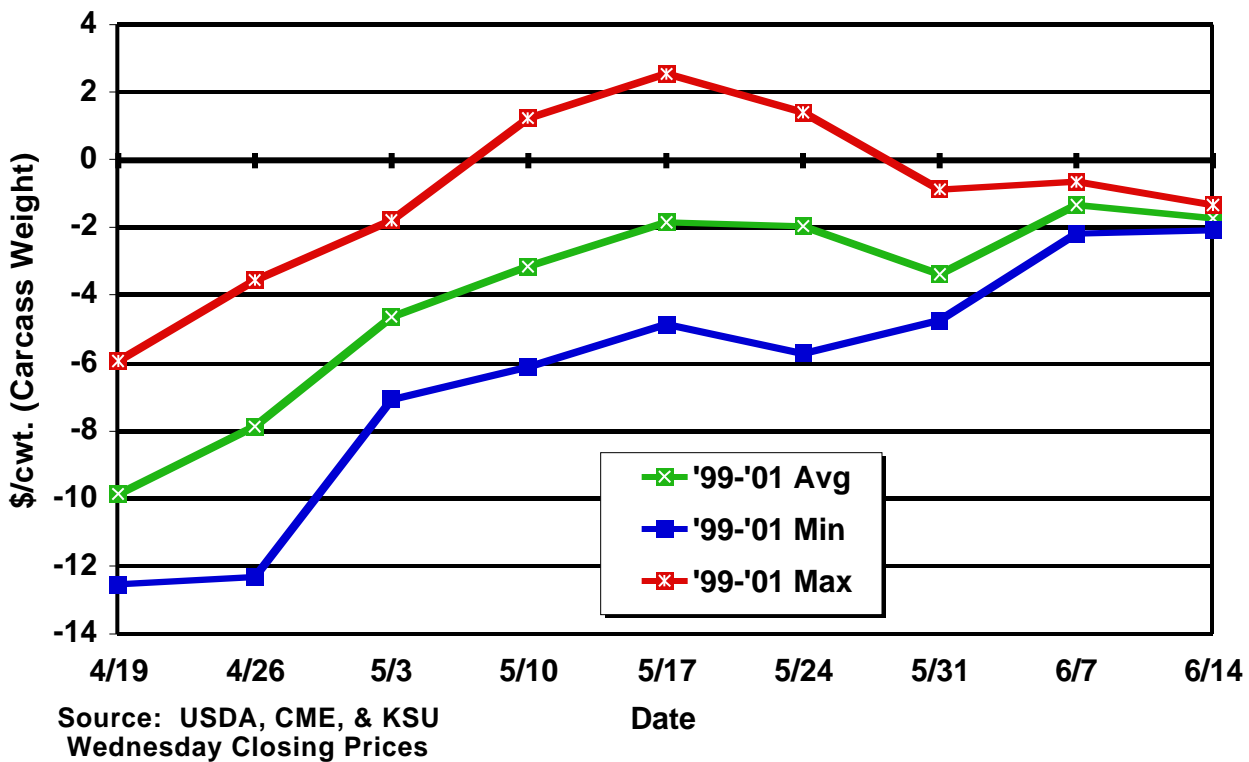
February CME Lean Hog Basis Western Corn Belt 51-52% Lean, 170-191 Lb. Carcass



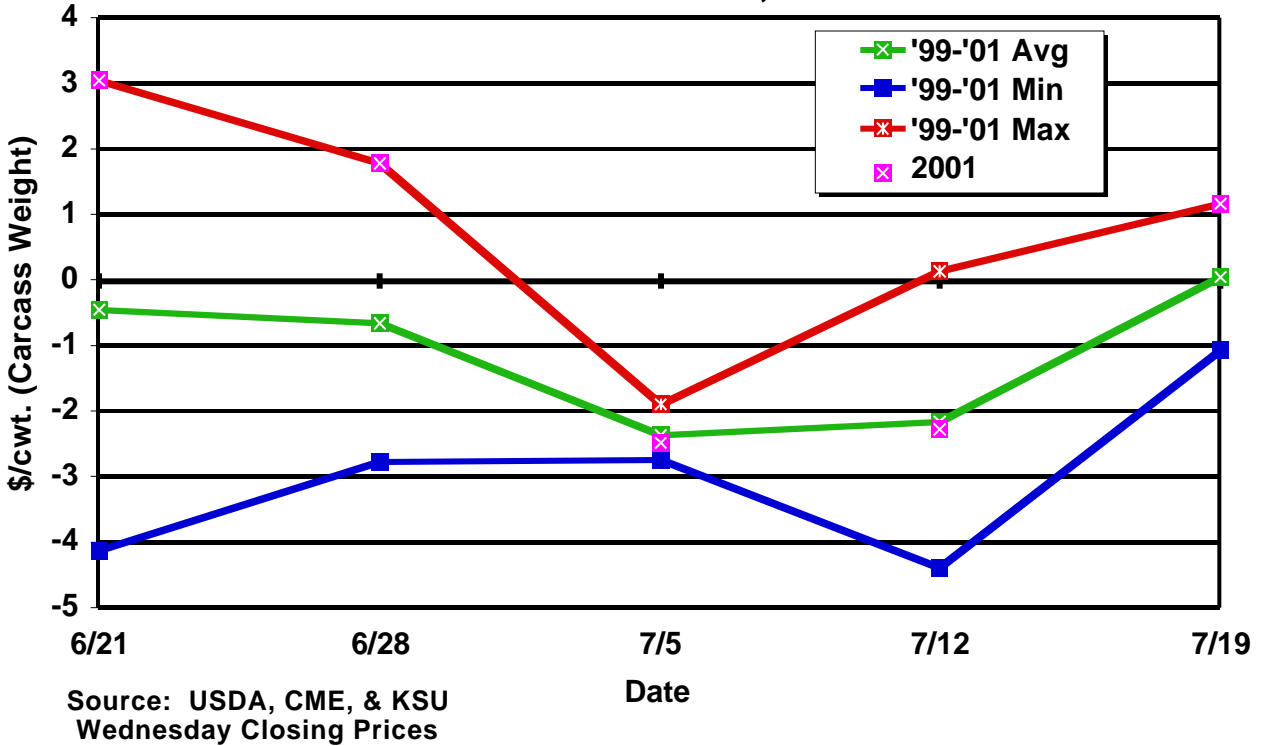
April CME Lean Hog Basis Western Corn Belt 51-52% Lean, 170-191 Lb. Carcass



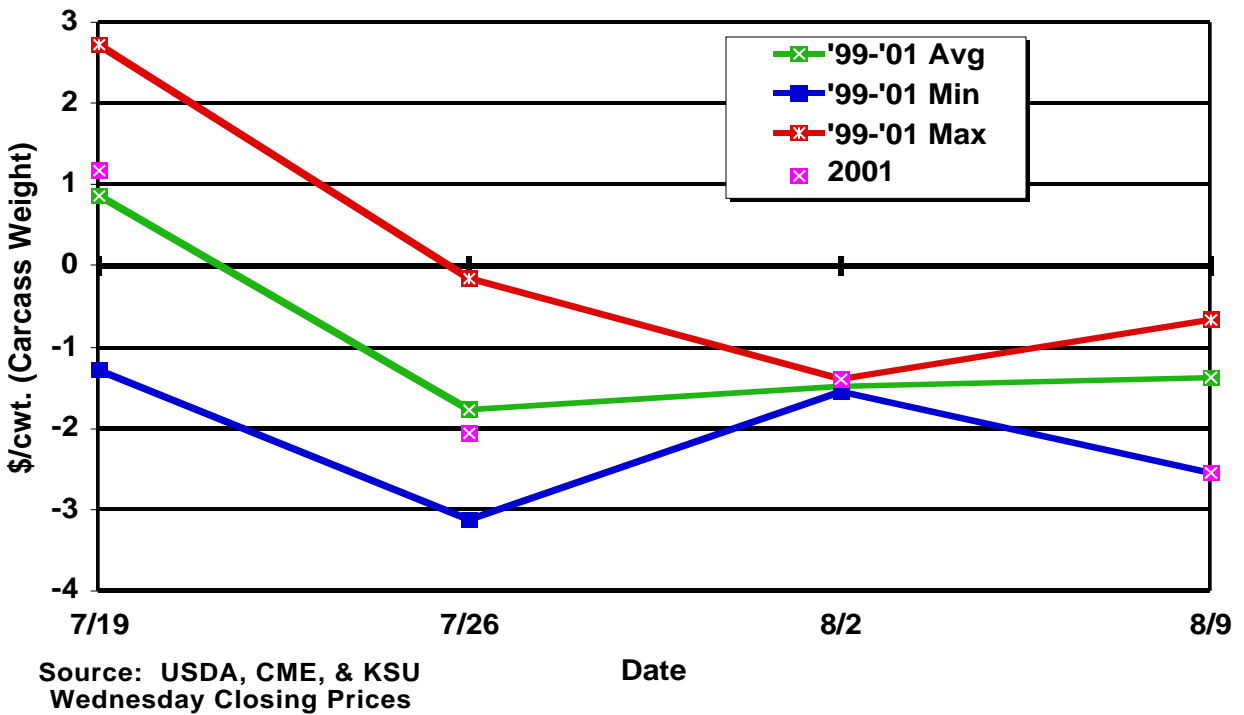
June CME Lean Hog Basis Western Corn Belt 51-52% Lean, 170-191 Lb. Carcass



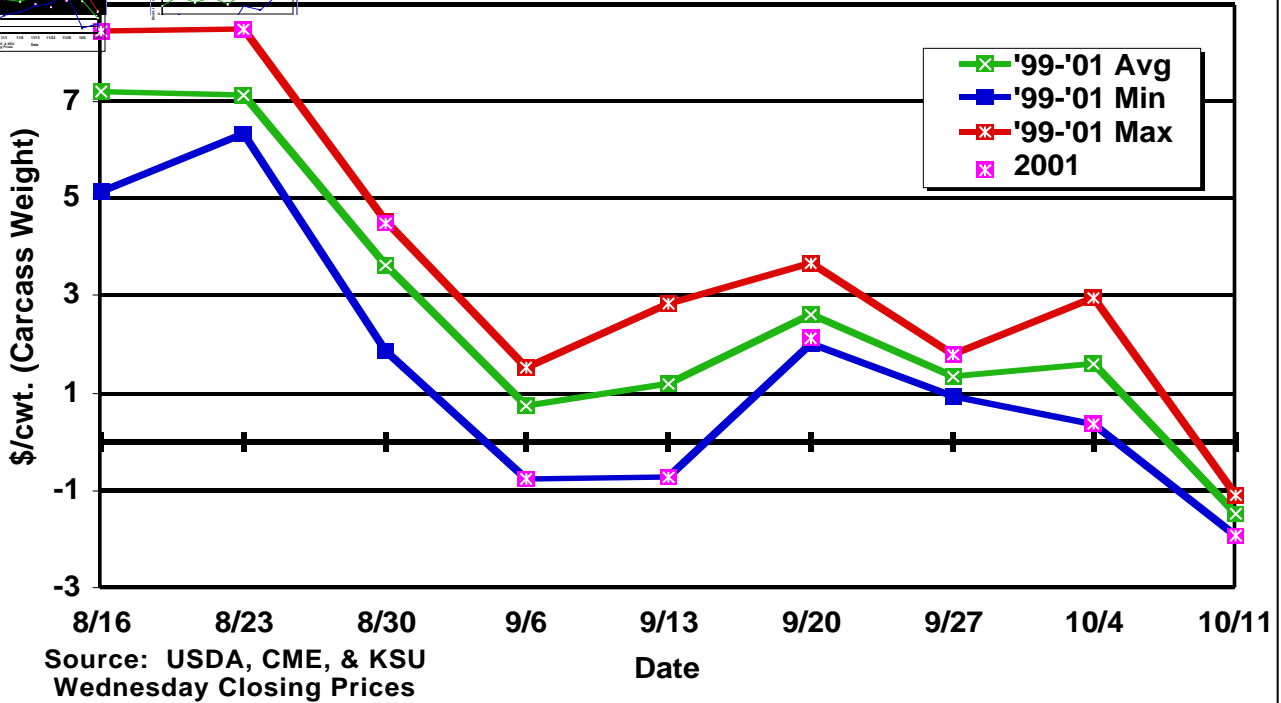
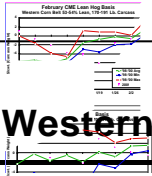
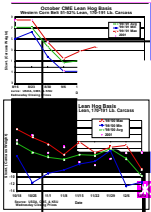
July CME Lean Hog Basis Western Corn Belt 51-52% Lean, 170-191 Lb. Carcass



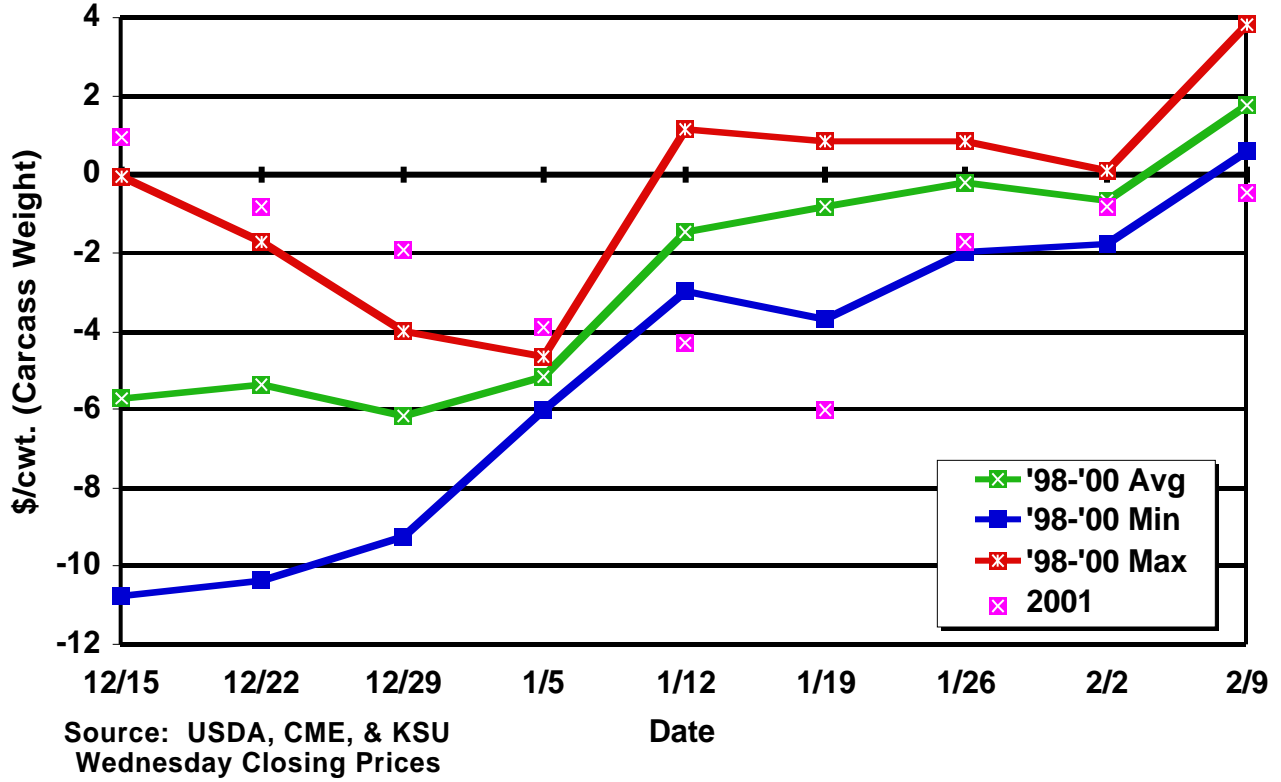
August CME Lean Hog Basis Western Corn Belt 51-52% Lean, 170-191 Lb. Carcass



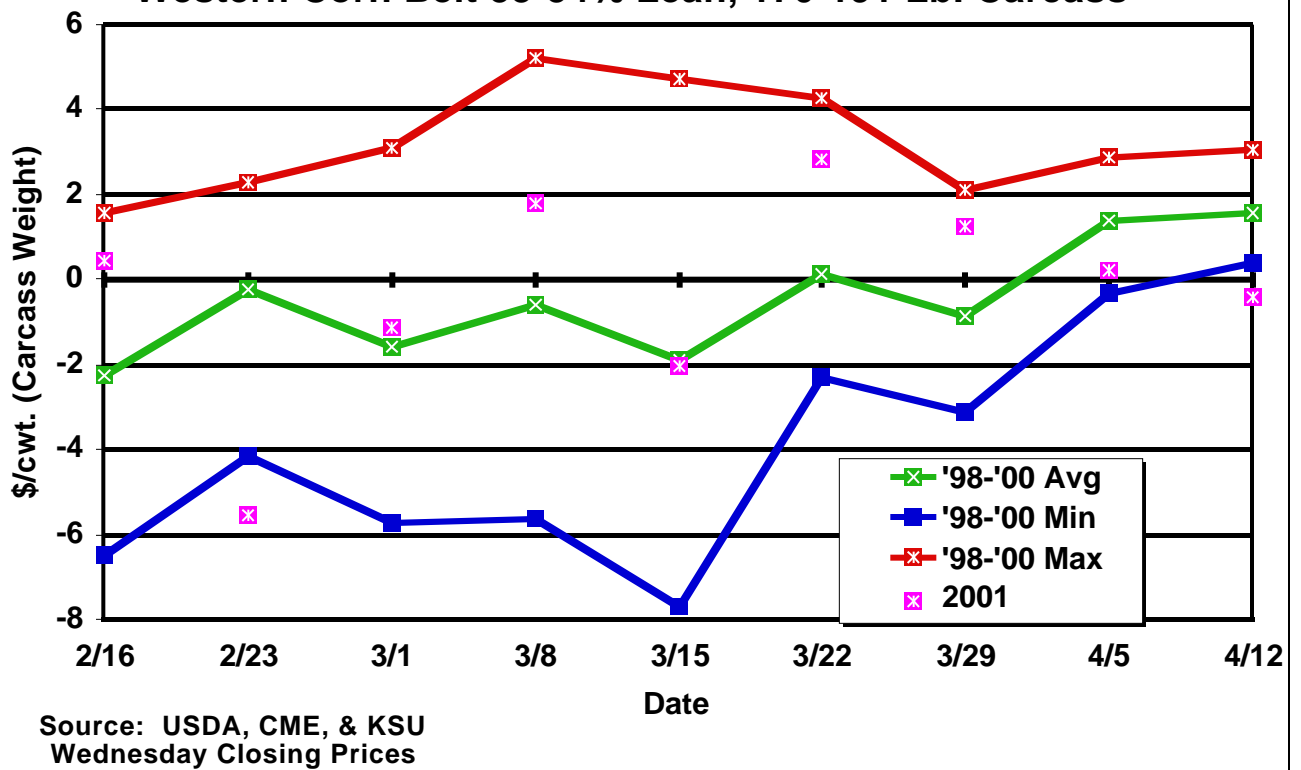
October CME Lean Hog Basis Western Corn Belt 51-52% Lean, 170-191 Lb. Carcass



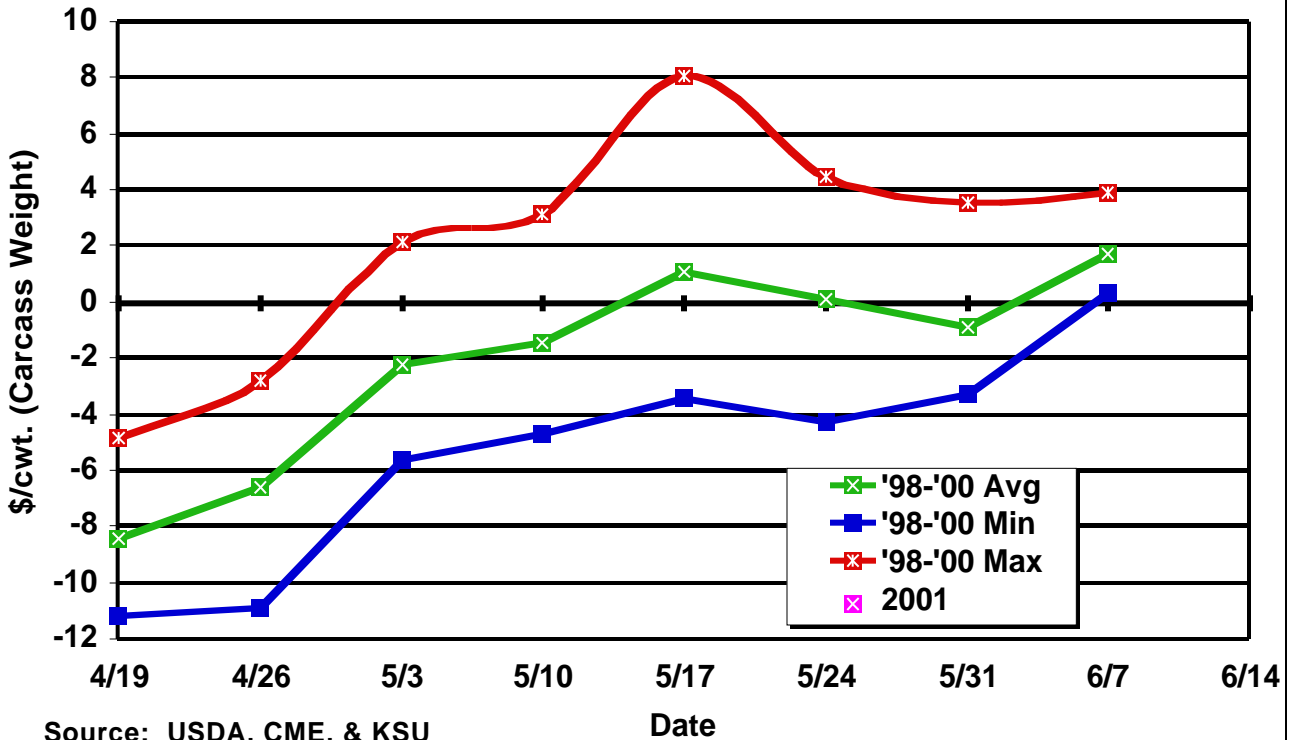
February CME Lean Hog Basis Western Corn Belt 53-54% Lean, 170-191 Lb. Carcass



April CME Lean Hog Basis Western Corn Belt 53-54% Lean, 170-191 Lb. Carcass

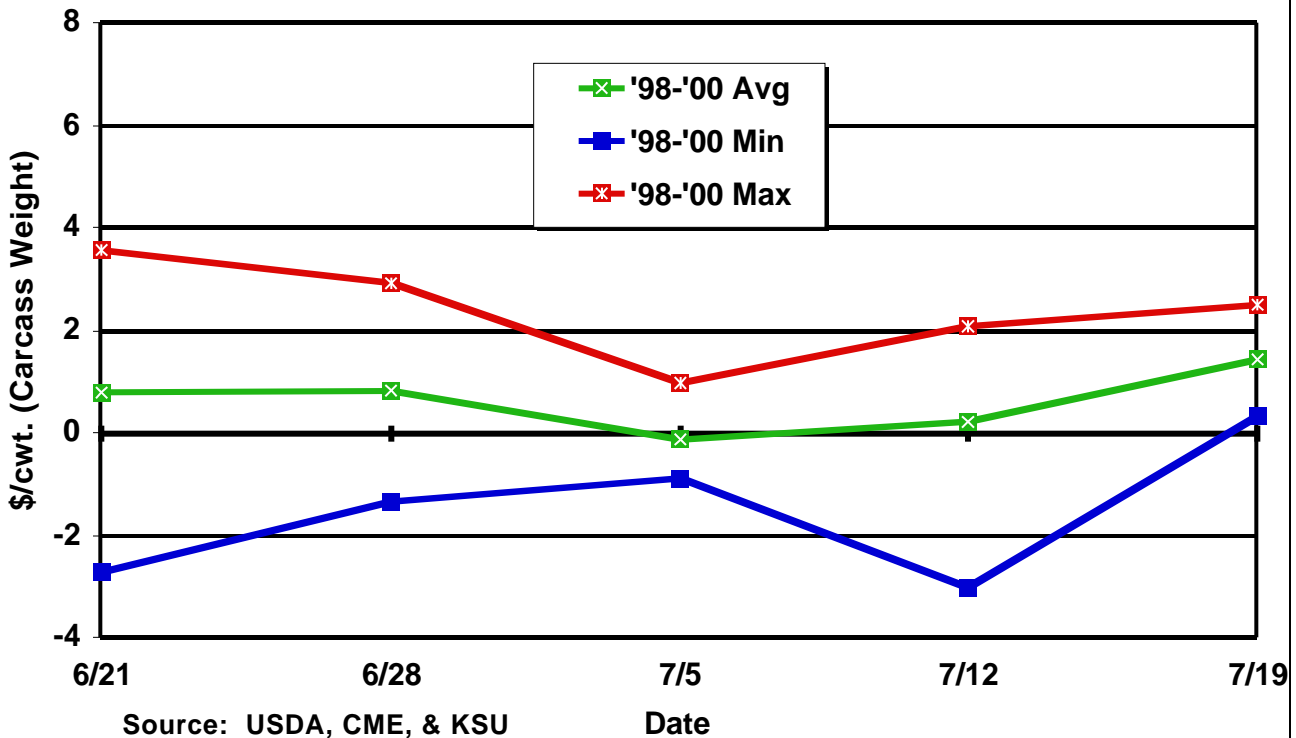


June CME Lean Hog Basis Western Corn Belt 53-54% Lean, 170-191 Lb. Carcass



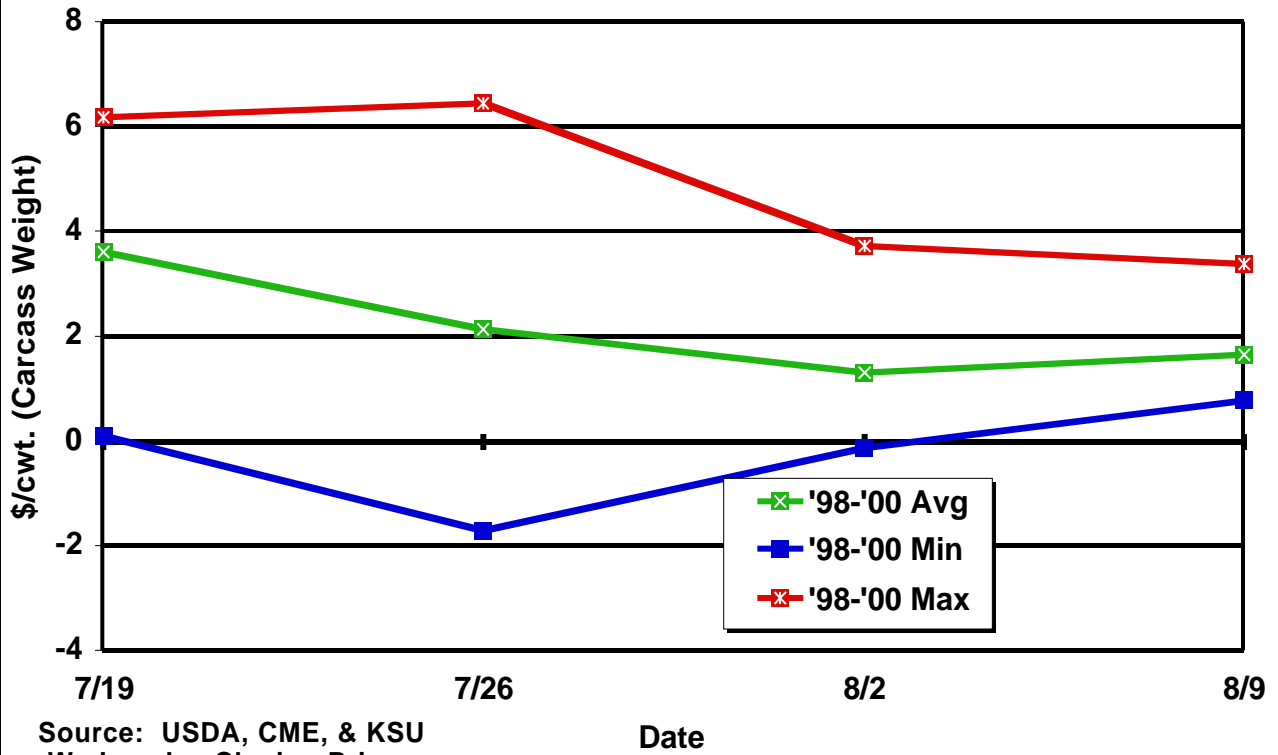
Source: USDA, CME, & KSU
Wednesday Closing Prices

July CME Lean Hog Basis Western Corn Belt 53-54% Lean, 170-191 Lb. Carcass

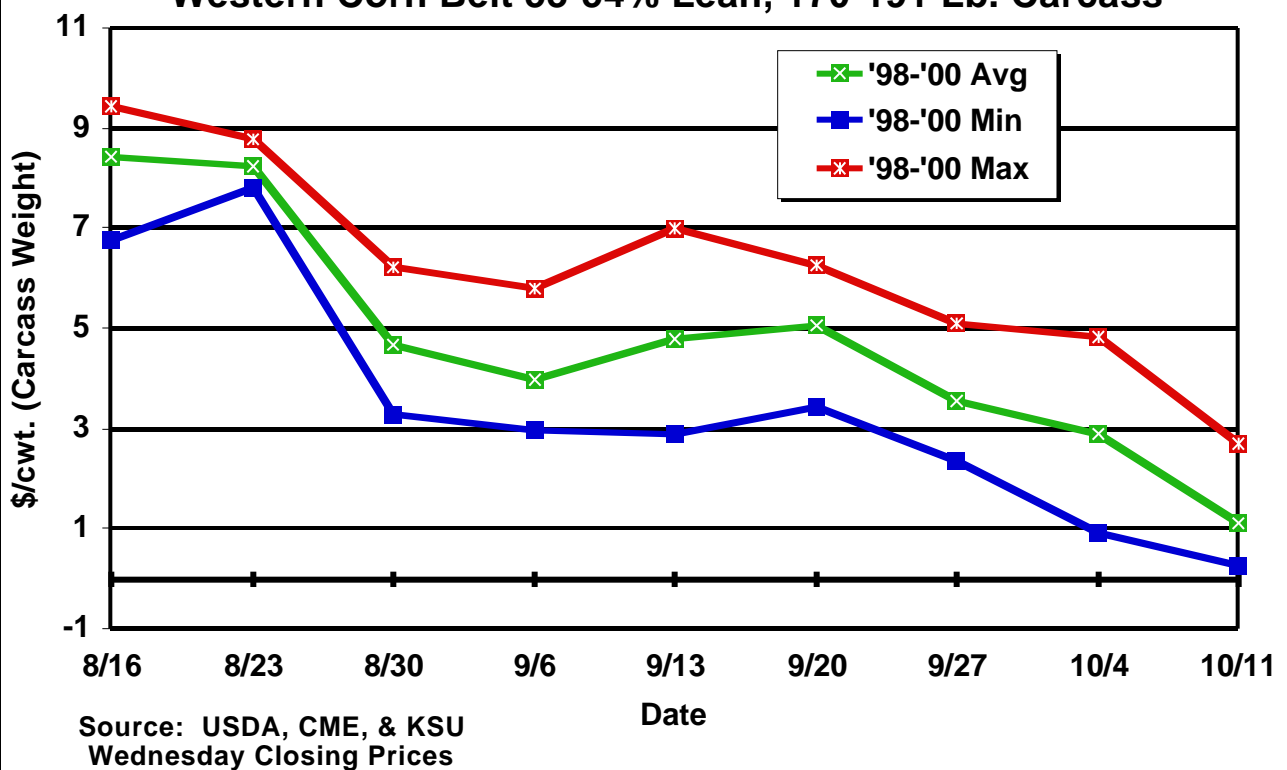


Source: USDA, CME, & KSU
Wednesday Closing Prices

August CME Lean Hog Basis Western Corn Belt 53-54% Lean, 170-191 Lb. Carcass



October CME Lean Hog Basis Western Corn Belt 53-54% Lean, 170-191 Lb. Carcass



December CME Lean Hog Basis Western Corn Belt 53-54% Lean, 170-191 Lb. Carcass

