

Weekly Cattle Price & Supply Graphs

Published August 16, 2002

Table of Contents

- Page 2.** Dodge City 500-600 Lb. Feeder Steers Weekly Average Cash Prices & Dodge City 700-800 Lb. Feeder Steers Weekly Average Cash Prices
- Page 3.** W. KS 1100-1300 Lb. Steers Weekly Average Cash Prices & Mid-Month W. KS Slaughter Cattle Basis Forecasts
- Page 4.** Mid-Month Futures Based Price Forecasts W KS 11-13 cwt. Steers Mid-Month 7-8 cwt. Feeder Steer Basis Forecasts
- Page 5.** Mid-Month Futures Based Price Forecasts 7-8 cwt. Feeder Steers Weekly F.I. Cattle Slaughter
- Page 6.** Average Daily F.I. Cattle Slaughter & Weekly F.I. Beef Production
- Page 7.** Average Daily F.I. Beef Production & Weekly F.I. Cattle Dressed Weights
- Page 8.** Monthly F. I. Cattle Dressed Weights & Weekly F.I. Cow Slaughter
- Page 9.** Average Daily F.I. Cow Slaughter & Weekly F.I. Beef Cow Slaughter
- Page 10.** U.S. Total Beef Exports & U.S. Beef Exports to Japan
- Page 11.** U.S. Cattle On Feed & U.S. Fed Cattle Marketings
- Page 12.** U.S. Net Placements of Cattle On Feed & Estimated Cattle On Feed Over 120 Days
-

Cattle Price & Supply Graphs is published by K-State Research & Extension and the K-State Livestock and Meat Marketing Group in the Department of Agricultural Economics at Kansas State University, 218 Waters Hall, Manhattan, KS 66506.

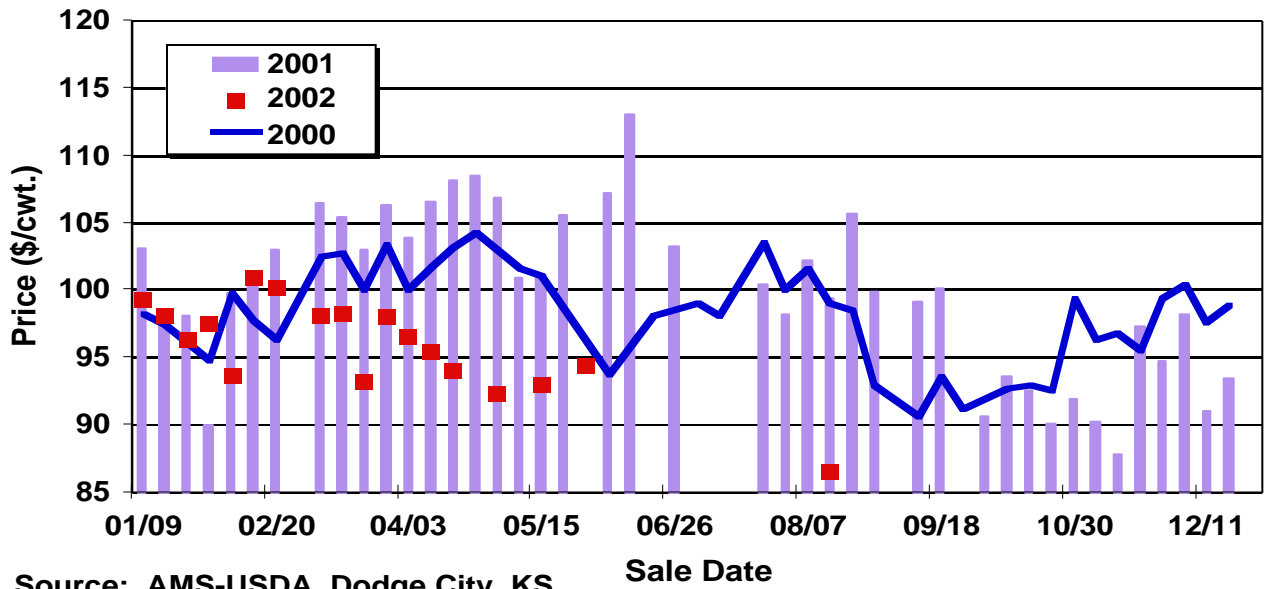
Editor: James Mintert, Professor of Agricultural Economics.

Cattle Price & Supply Graphs is available on the World Wide Web at
<http://www.agecon.ksu.edu/livestock>

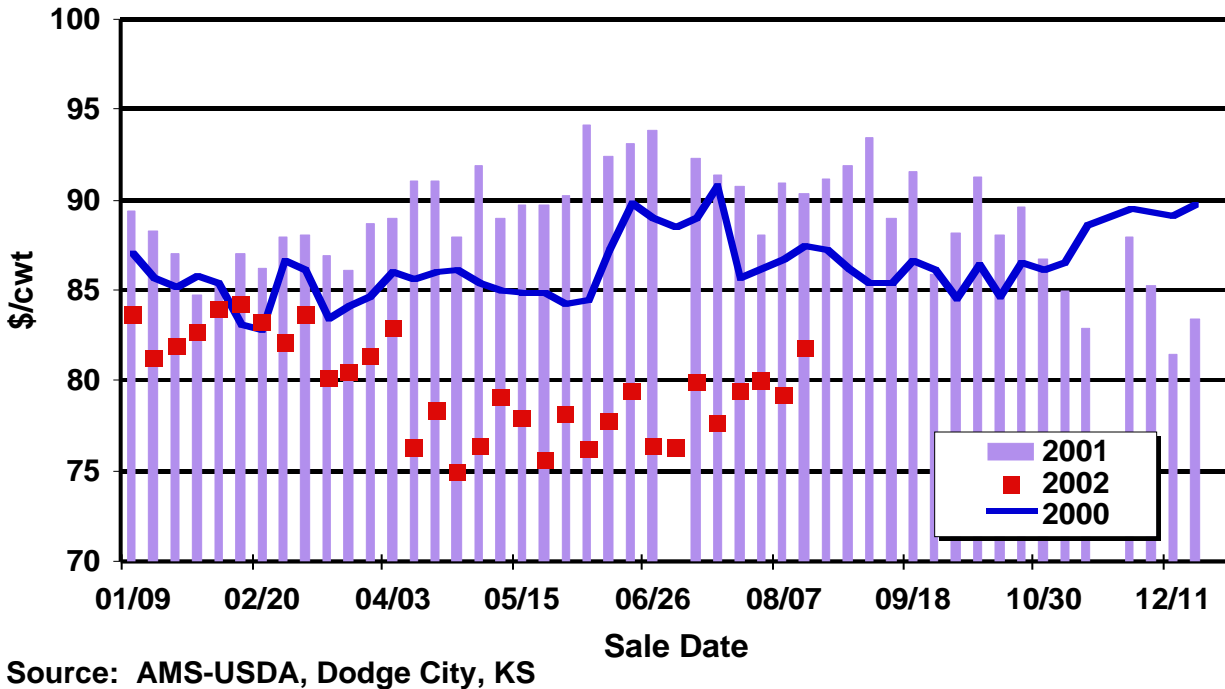
Phone: 785-532-1518

Fax: 785-532-6925

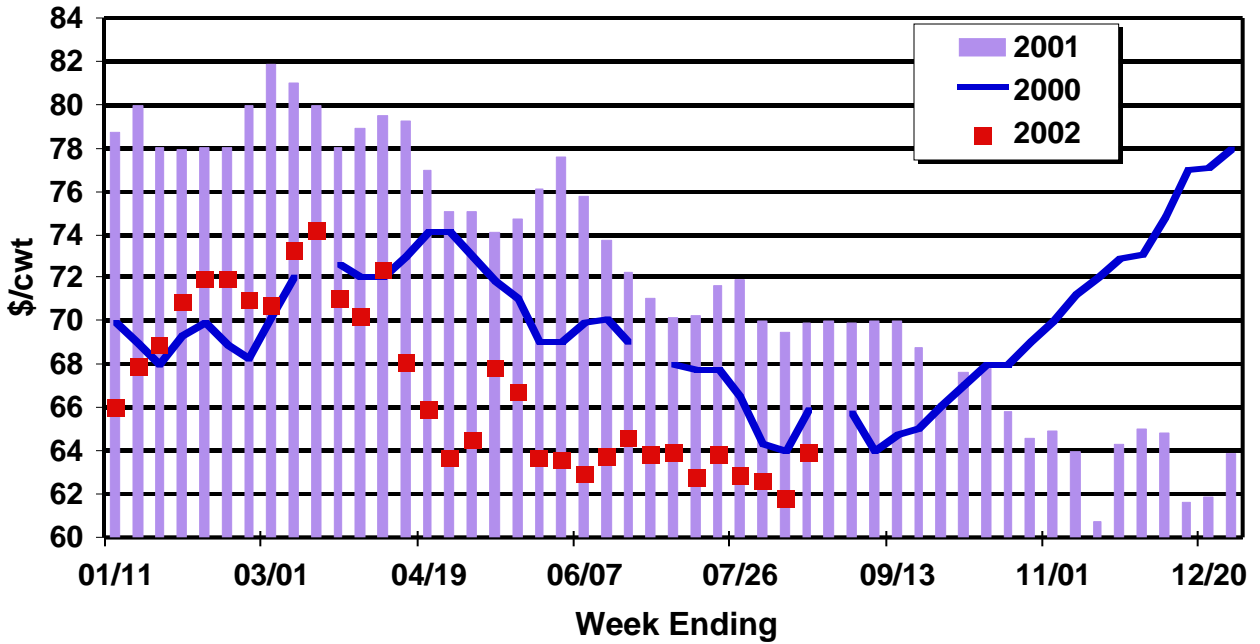
Dodge City 500-600 Lb. Steers Weekly Average Cash Prices



Dodge City 700-800 Lb. Feeder Steers Weekly Average Cash Prices

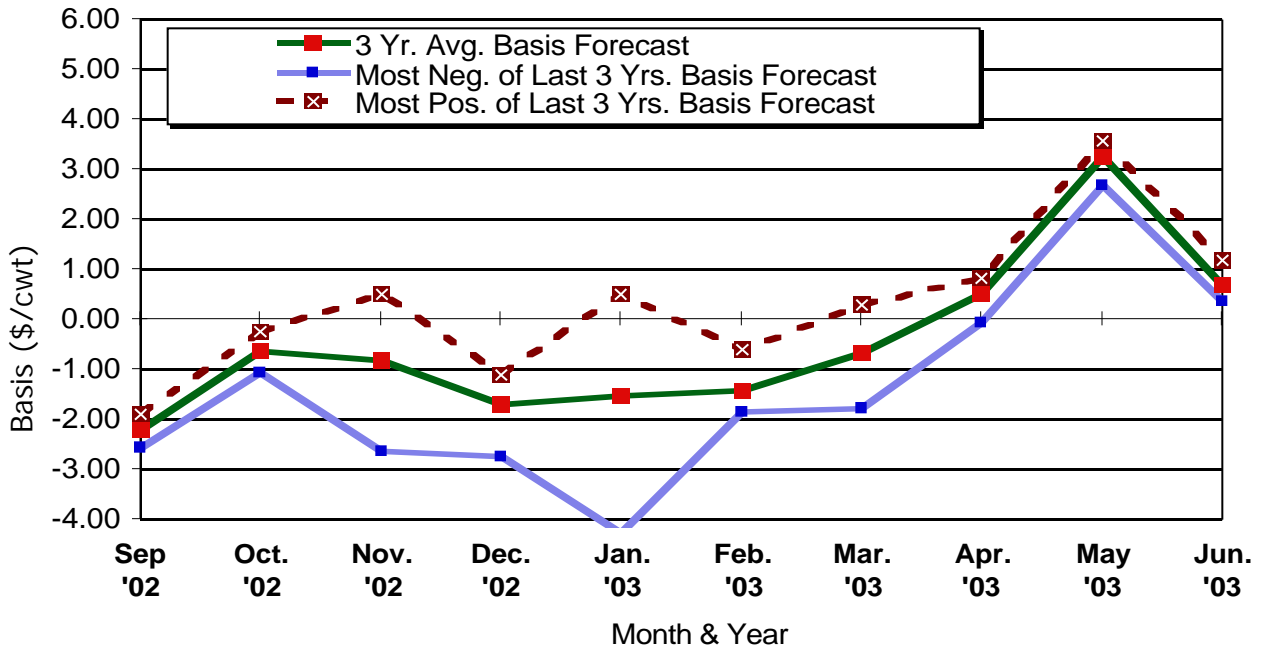


Kansas Direct Slaughter Steers Weekly Average Cash Prices



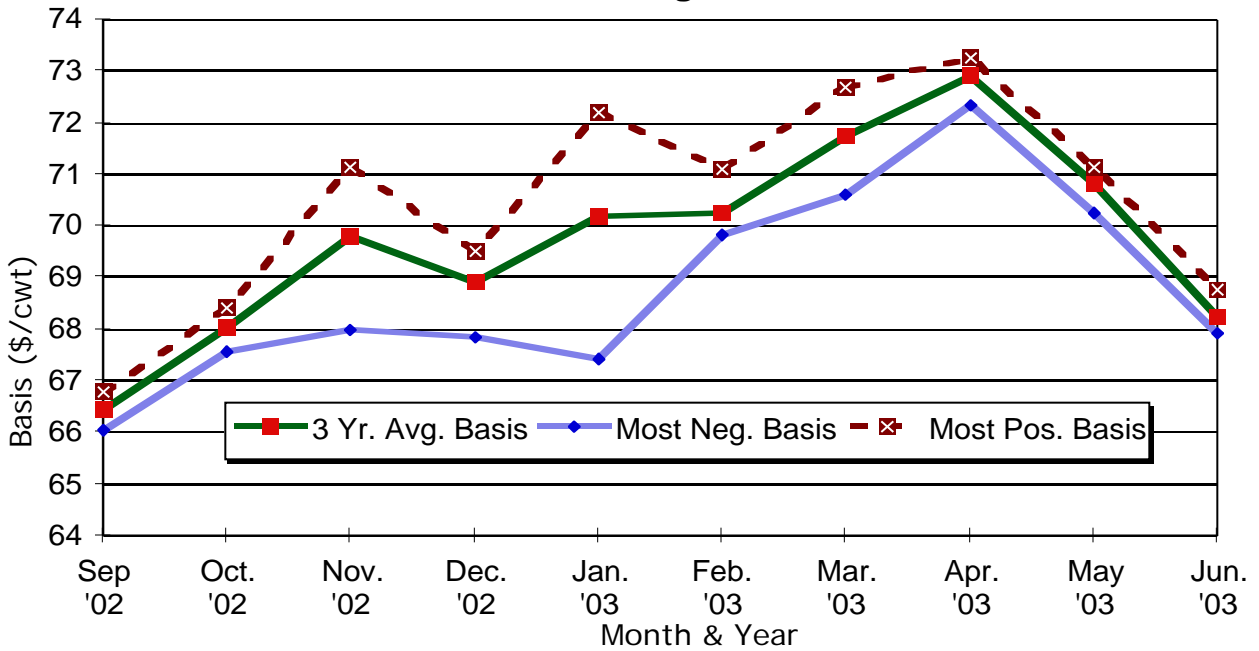
Source: AMS-USDA, Dodge City, KS

Mid-Month W. Kansas Slaughter Steer Basis Forecast



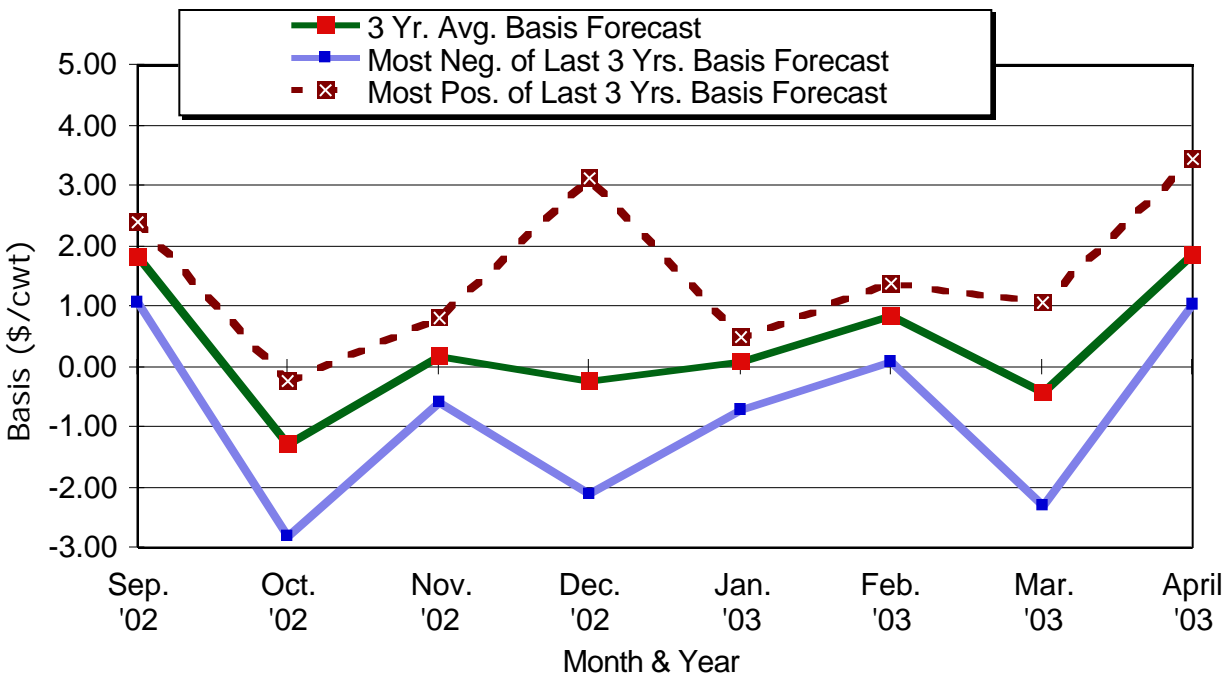
Source: CME & K-State Research & Extension
Nearby Live Cattle Futures Contract, Basis = Cash Price- Nearby Futures Price

Mid-Month Futures Based Price Forecasts Kansas Slaughter Steers



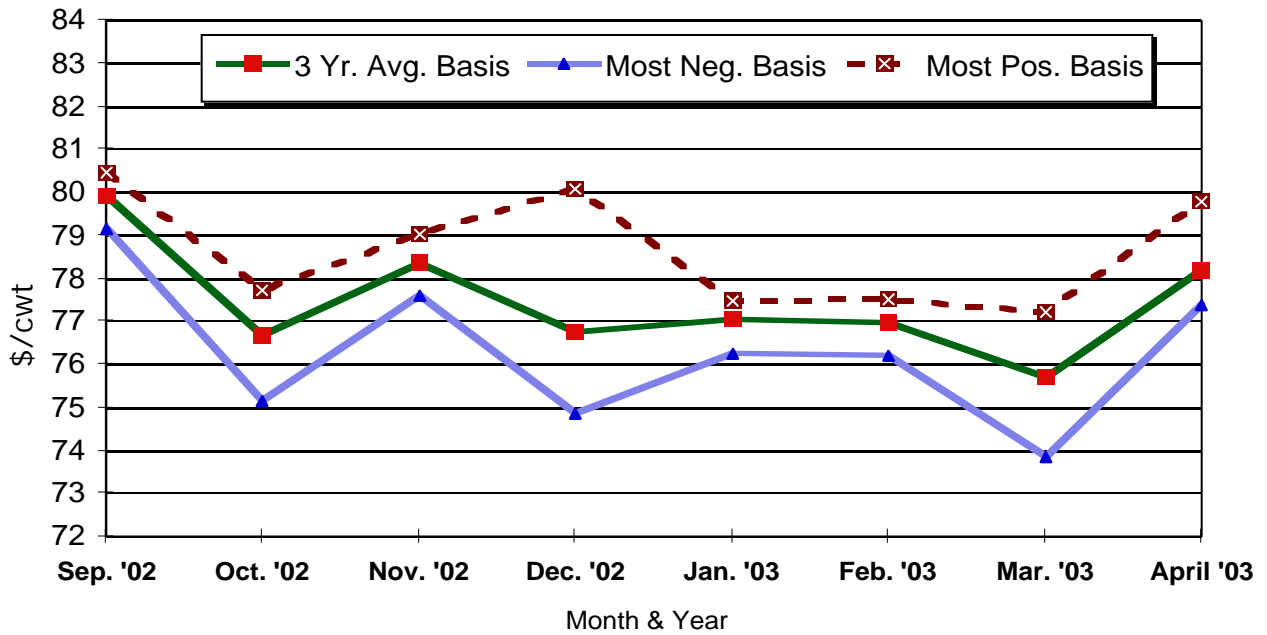
Source: CME & K-State Research & Extension
Forecasts = Friday's Futures Settlement Prices + Basis Estimates

Mid-Month Feeder Steer Basis Forecasts 700-800 Lb. Feeder Steers, Dodge City, KS



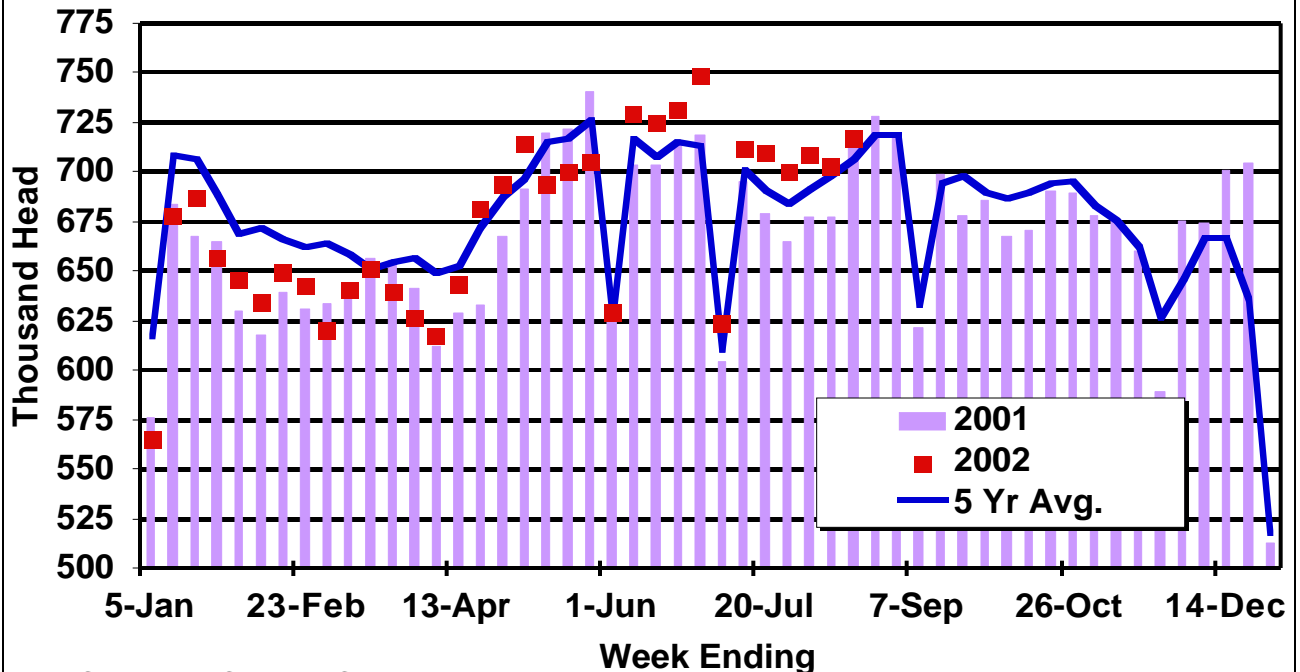
Source: CME & K-State Research & Extension
Basis = Cash Price - Nearby Futures Price

Mid-Month Futures Based Price Forecasts 700-800 Lb. Feeder Steers, Dodge City, KS



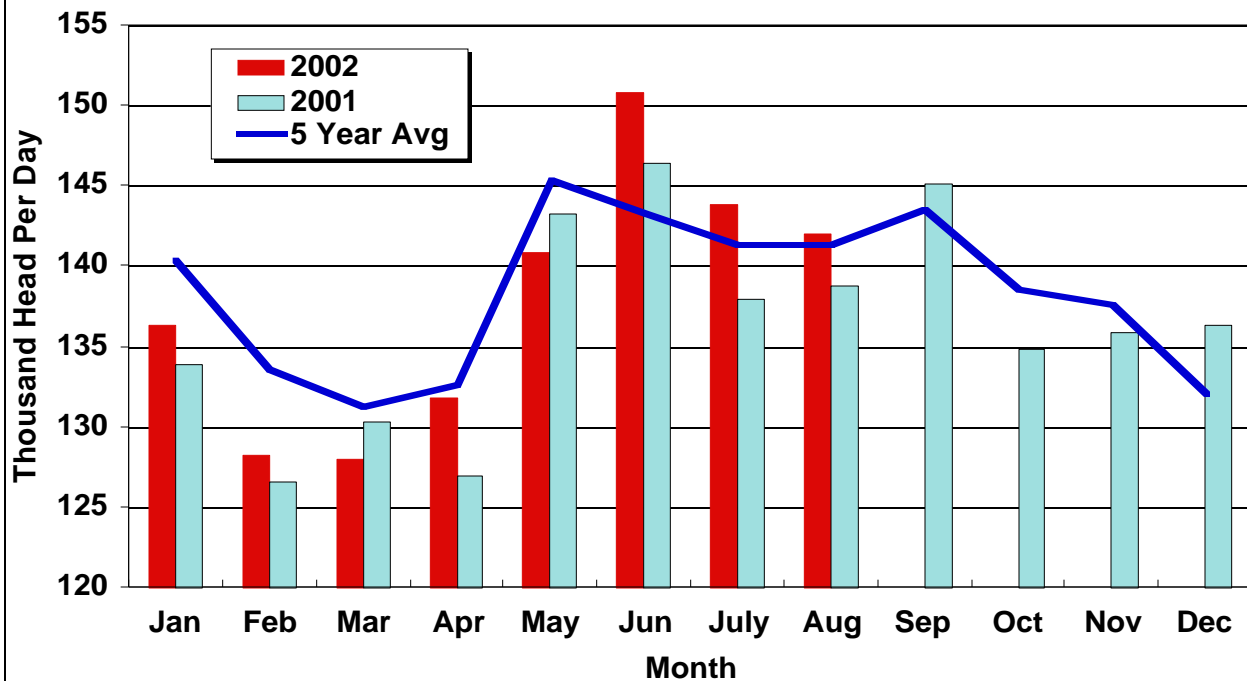
Source: CME & K-State Research & Extension
Forecasts = Friday's Settlement Prices + Basis Estimates

Weekly F.I. Cattle Slaughter



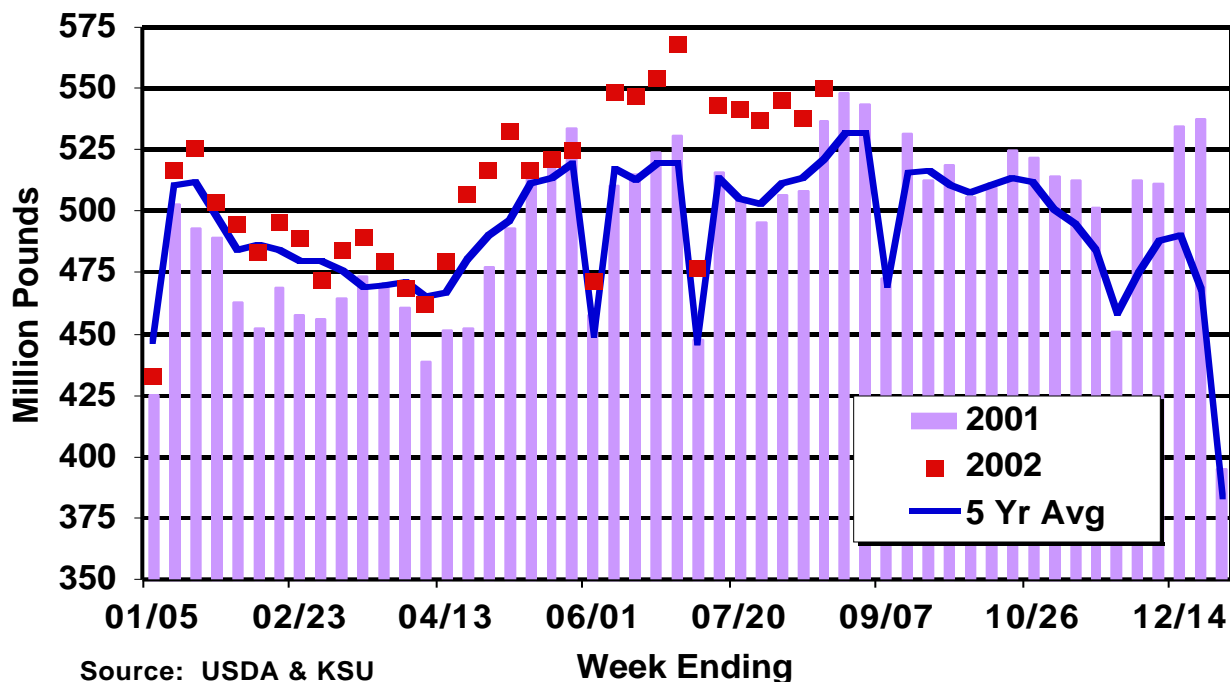
Source: USDA & KSU

Average Daily F.I. Cattle Slaughter



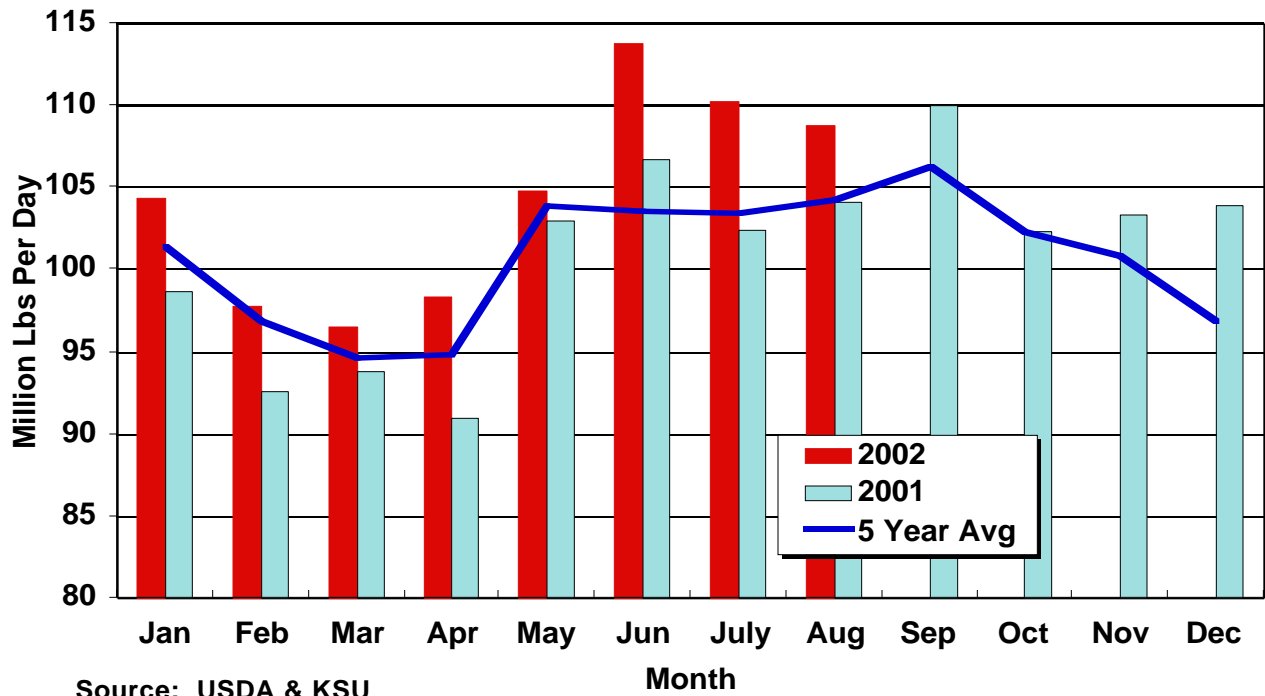
Source: USDA & KSU

Weekly F.I. Beef Production

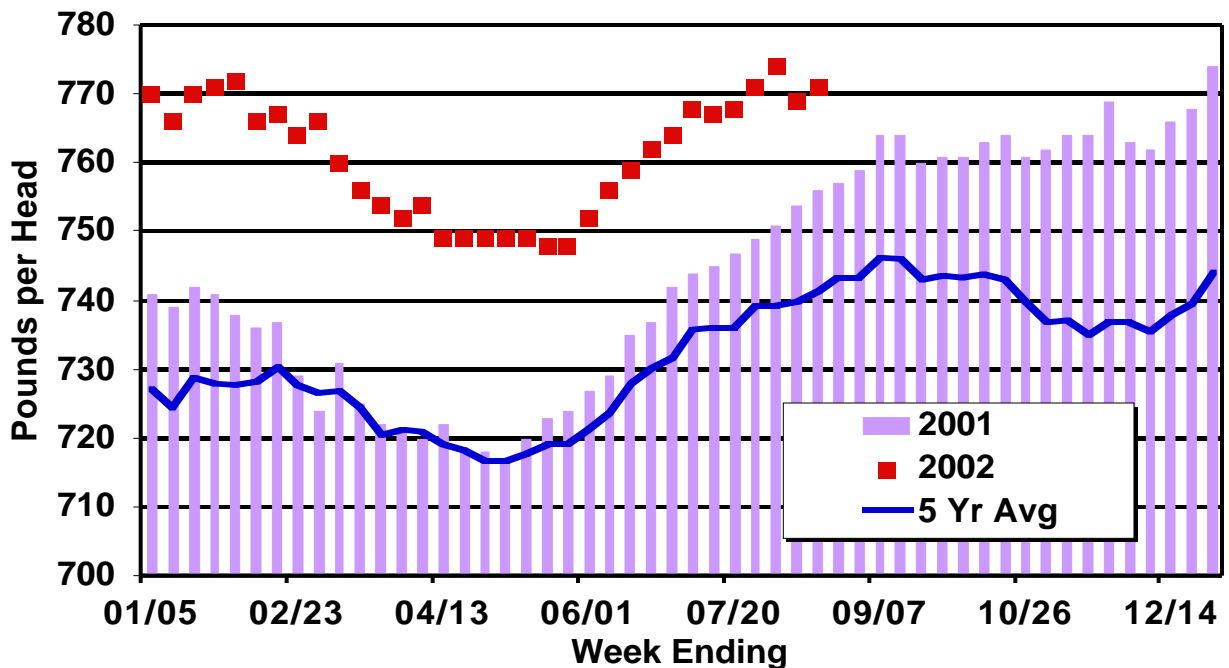


Source: USDA & KSU

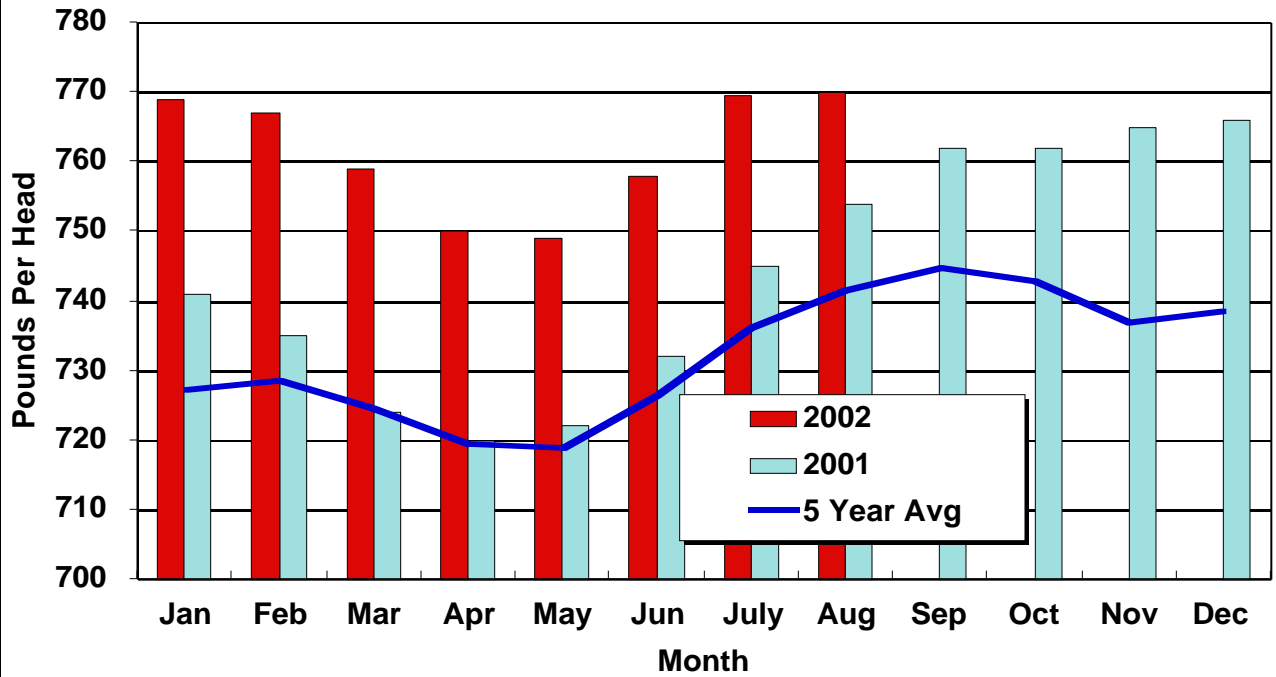
Average Daily F.I. Beef Production



F.I. Cattle Dressed Weights

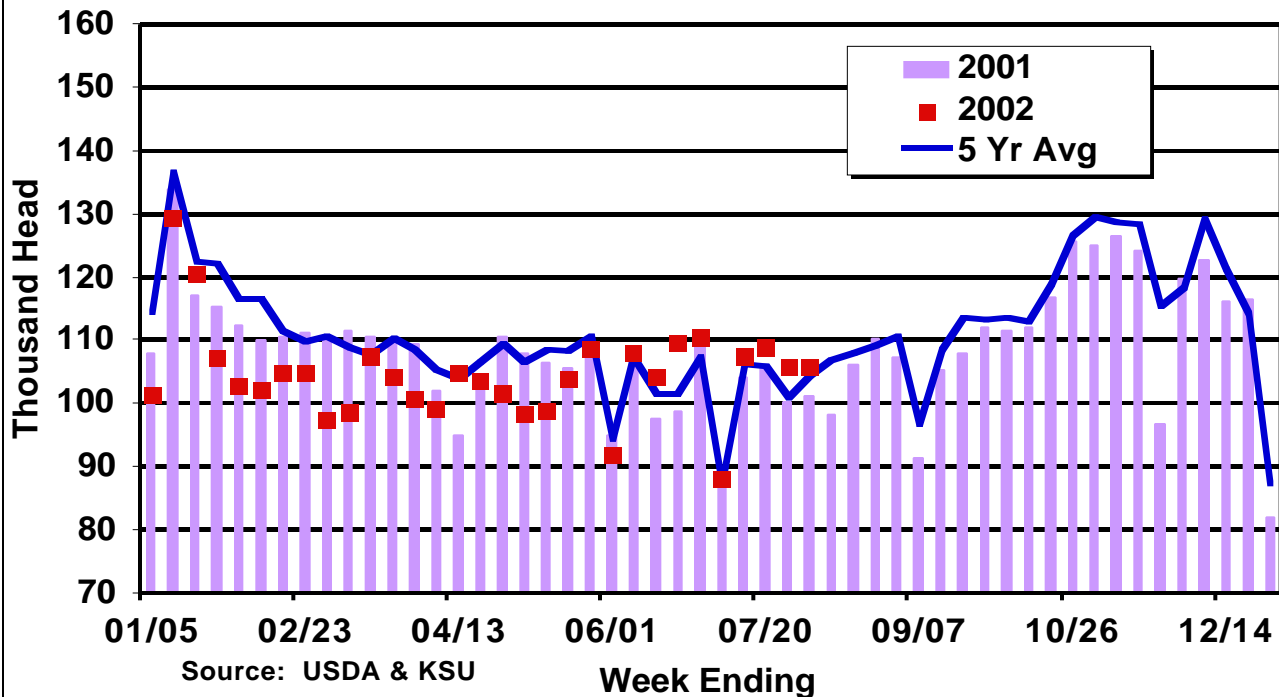


F.I. Cattle Dressed Weights



Source: USDA & KSU

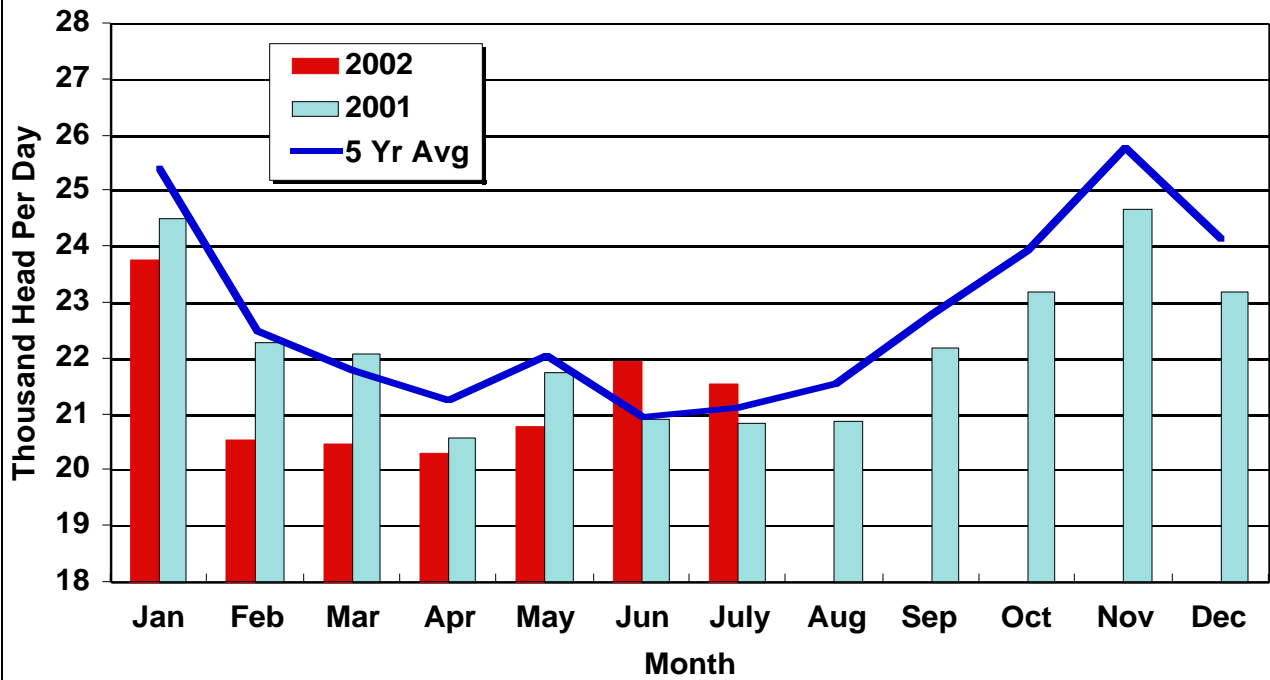
Weekly F.I. Cow Slaughter



Source: USDA & KSU

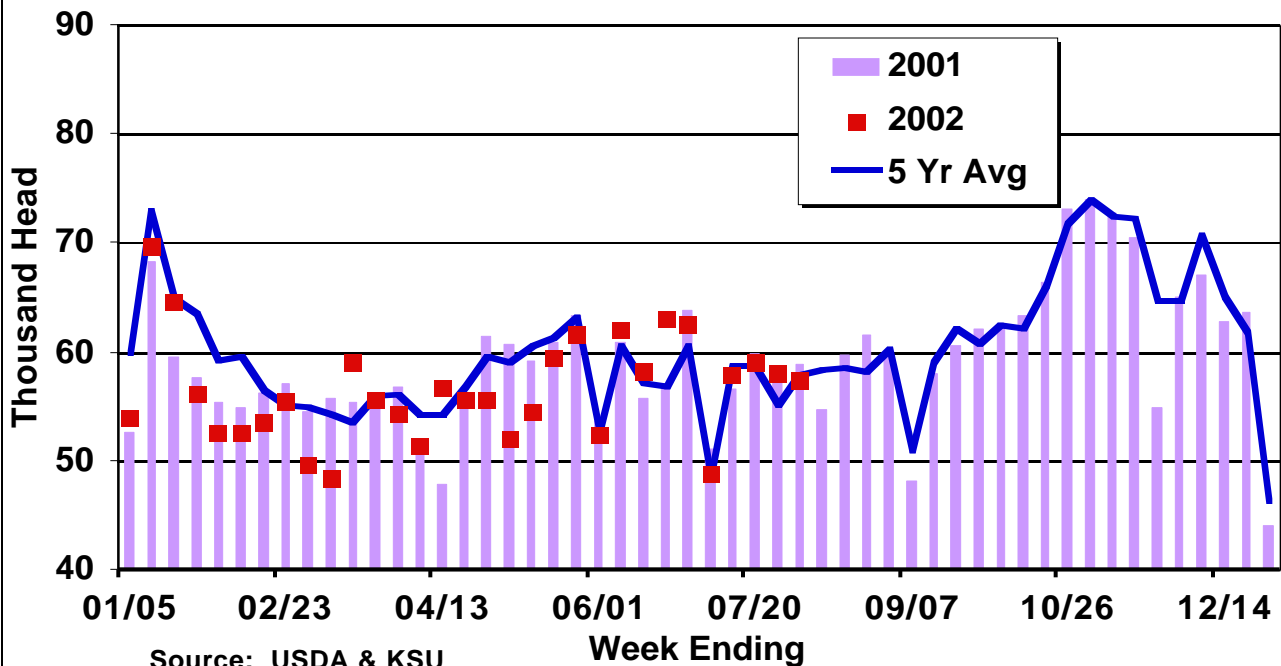
Week Ending

Average Daily F.I. Cow Slaughter



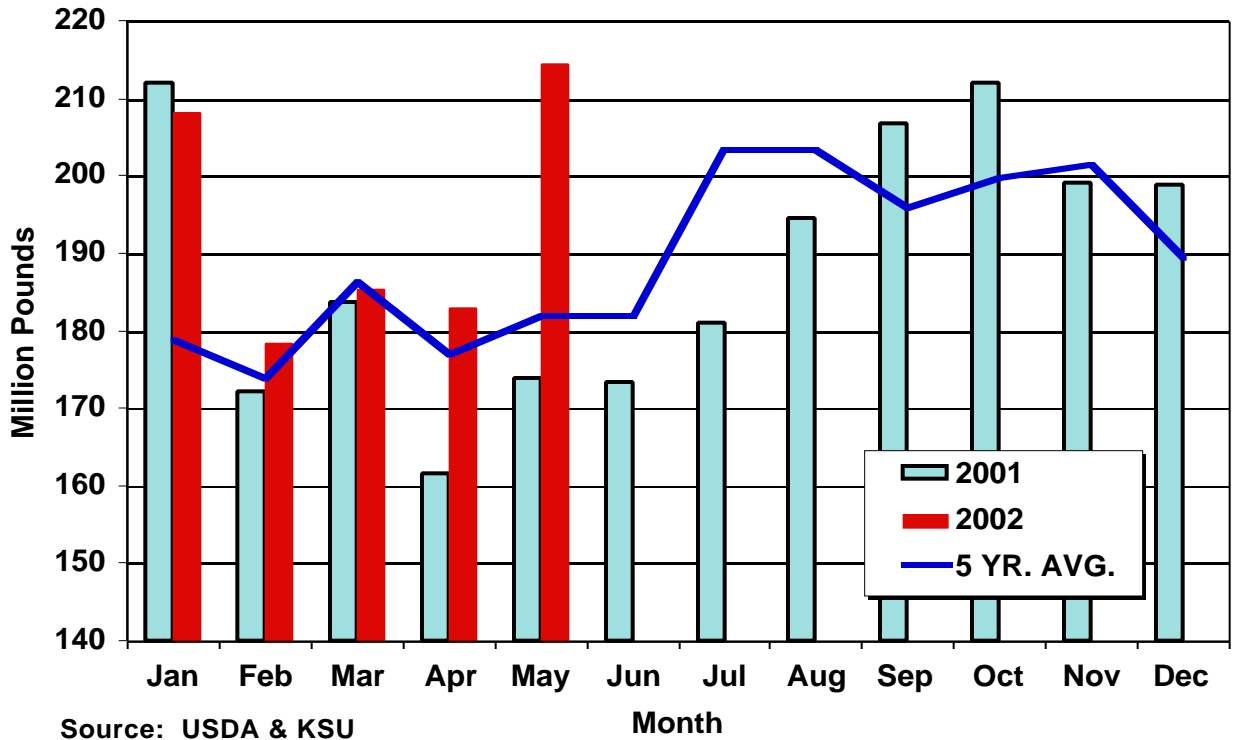
Source: USDA & KSU

Weekly F.I. Beef Cow Slaughter

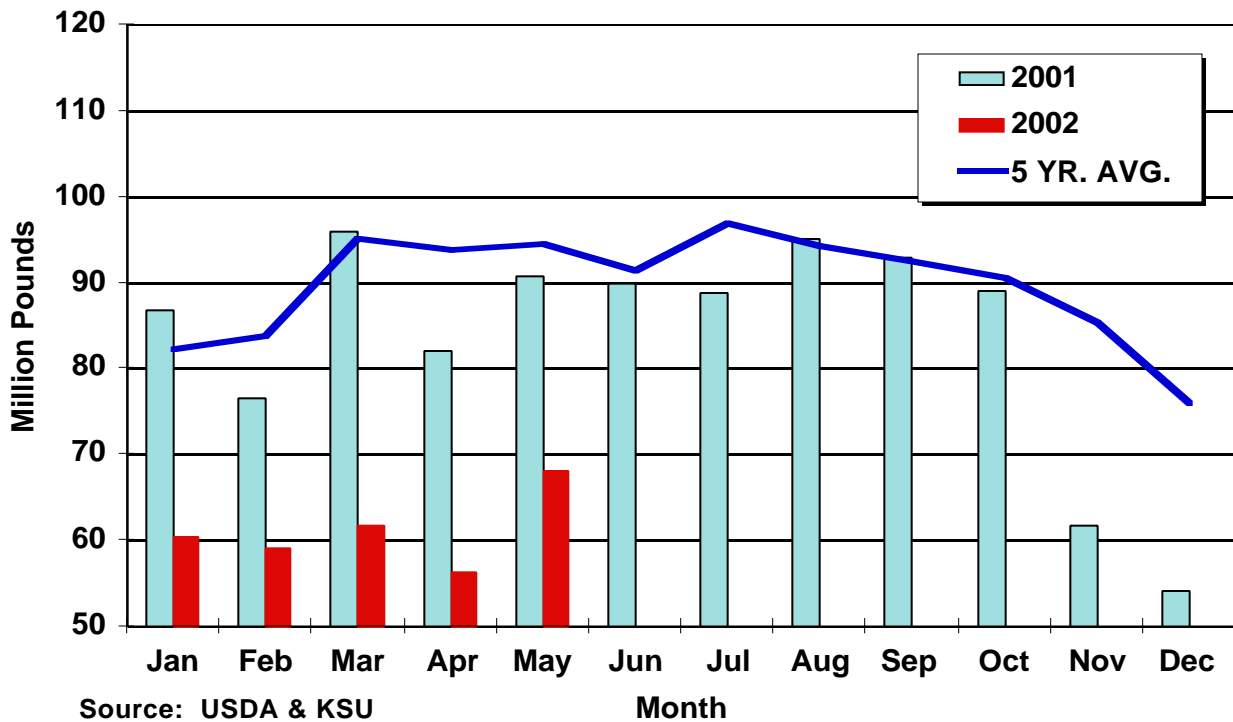


Source: USDA & KSU

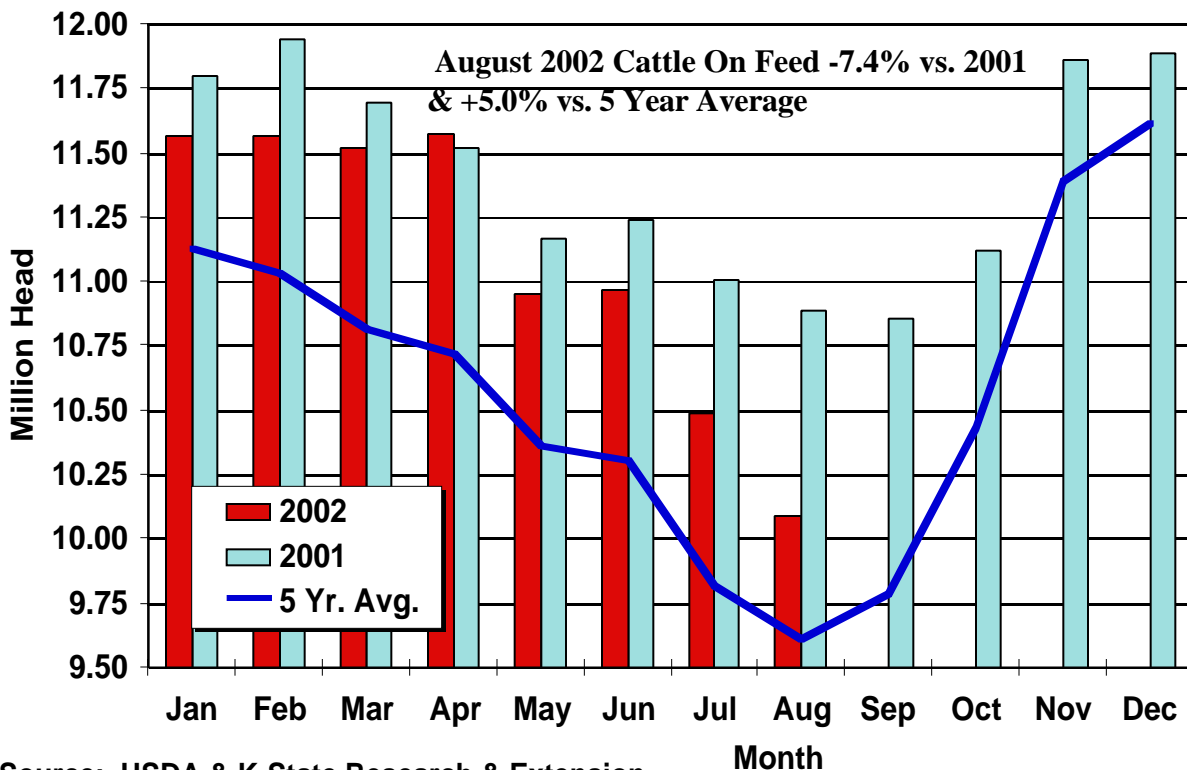
U.S. Beef Exports



U.S. Beef Exports To Japan

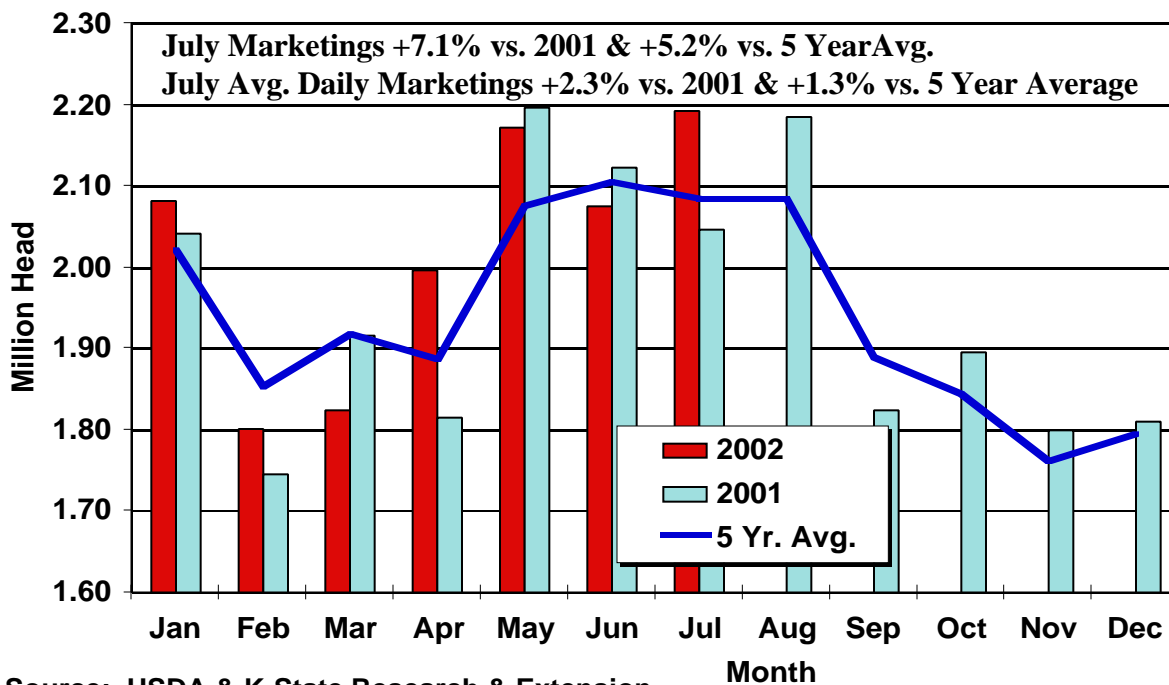


U.S. Cattle On Feed Lots Over 1000 Head



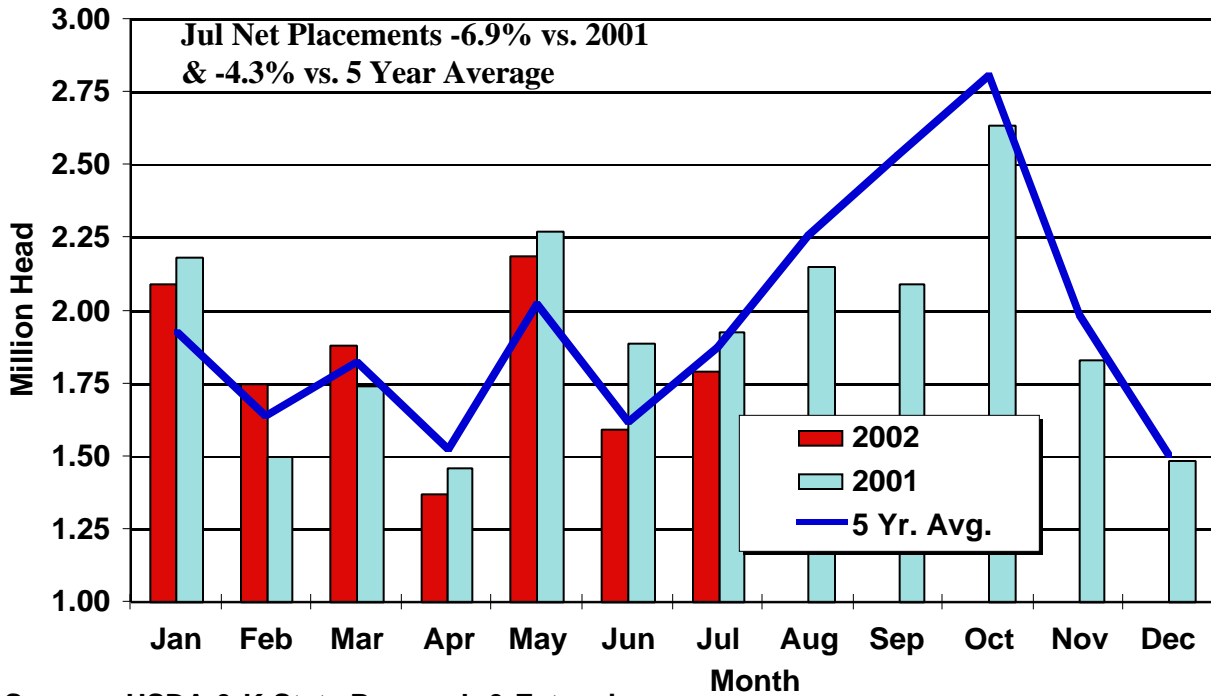
Source: USDA & K-State Research & Extension

U.S. Fed Cattle Marketings Lots Over 1000 Head



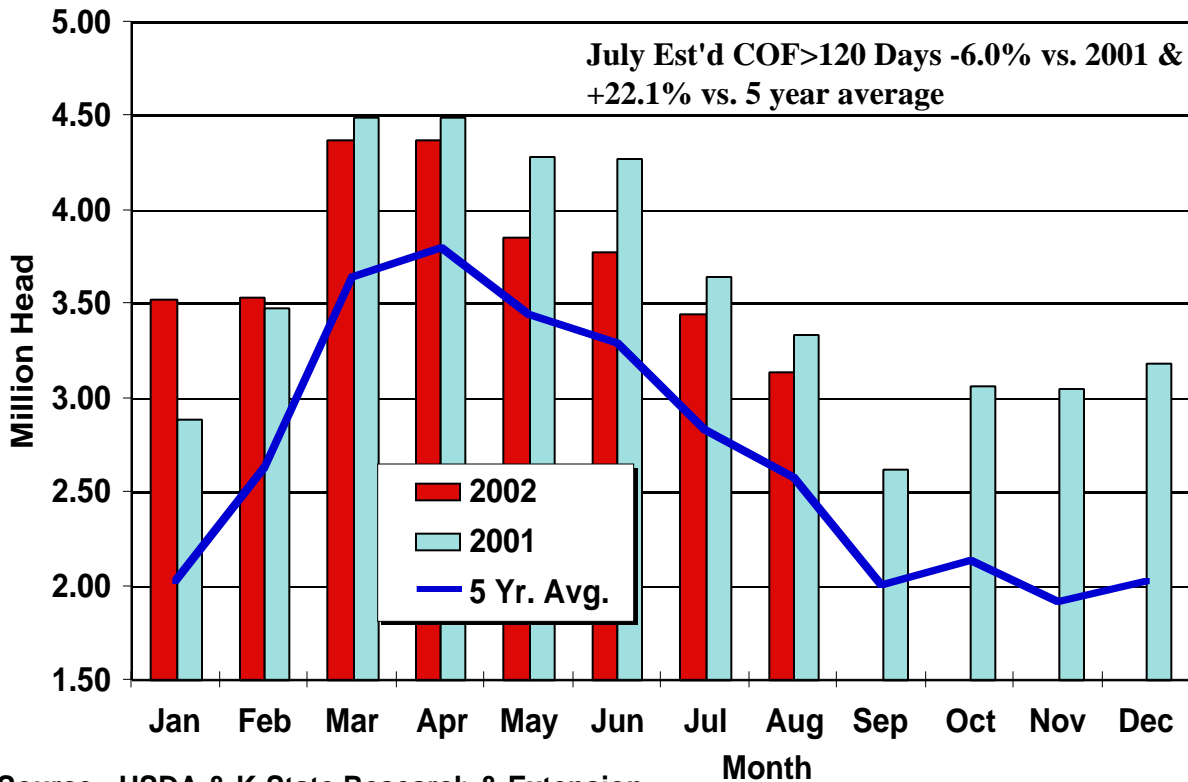
Source: USDA & K-State Research & Extension

U.S. Net Placements Lots Over 1000 Head



Source: USDA & K-State Research & Extension

Estimated U.S. Cattle On Feed Over 120 Days Lots Over 1000 Head



Source: USDA & K-State Research & Extension