

Weekly Hog Price & Supply Graphs

Published August 16, 2002

Table of Contents

- Page 2.** Futures Based W. Corn Belt 51-52% Lean Hog Price Forecasts & W. Corn Belt 51-52% Lean Hog Basis Forecasts
- Page 3.** National Base & National Net Hog Prices (Carcass Weight)
- Page 4.** Weekly Avg. #2 Pork Cutout Value & Pork Cold Storage Stocks
- Page 5.** Weekly F.I. Hog Slaughter & Avg. Daily F.I. Hog Slaughter
- Page 6.** Weekly F.I. Hog Weight & Weekly Pork Production
- Page 7.** Avg. Daily F.I. Pork Production & Weekly F.I. Sow Slaughter
- Page 8.** Avg. Daily F.I. Sow Slaughter & U.S. Pork Exports
-

Hog Price & Supply Graphs is published by K-State Research & Extension and the K-State Livestock and Meat Marketing Group in the Department of Agricultural Economics at Kansas State University, 218 Waters Hall, Manhattan, KS 66506.

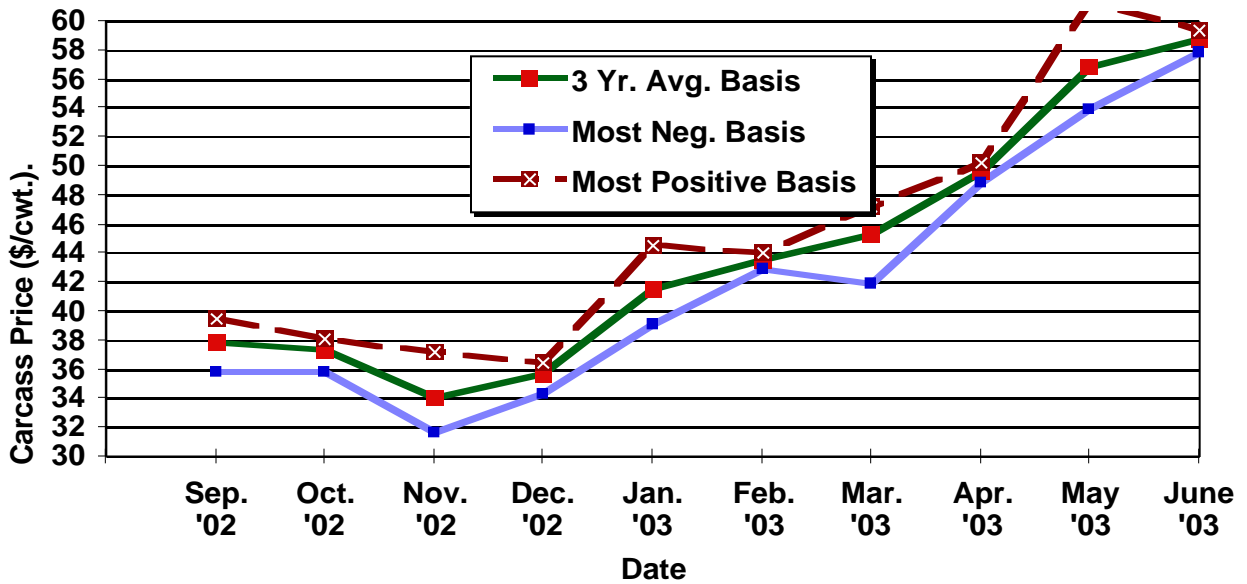
Editor: James Mintert, Professor of Agricultural Economics.

Hog Price & Supply Graphs is available on the World Wide Web at
<http://www.agecon.ksu.edu/livestock>

Phone: 785-532-1518

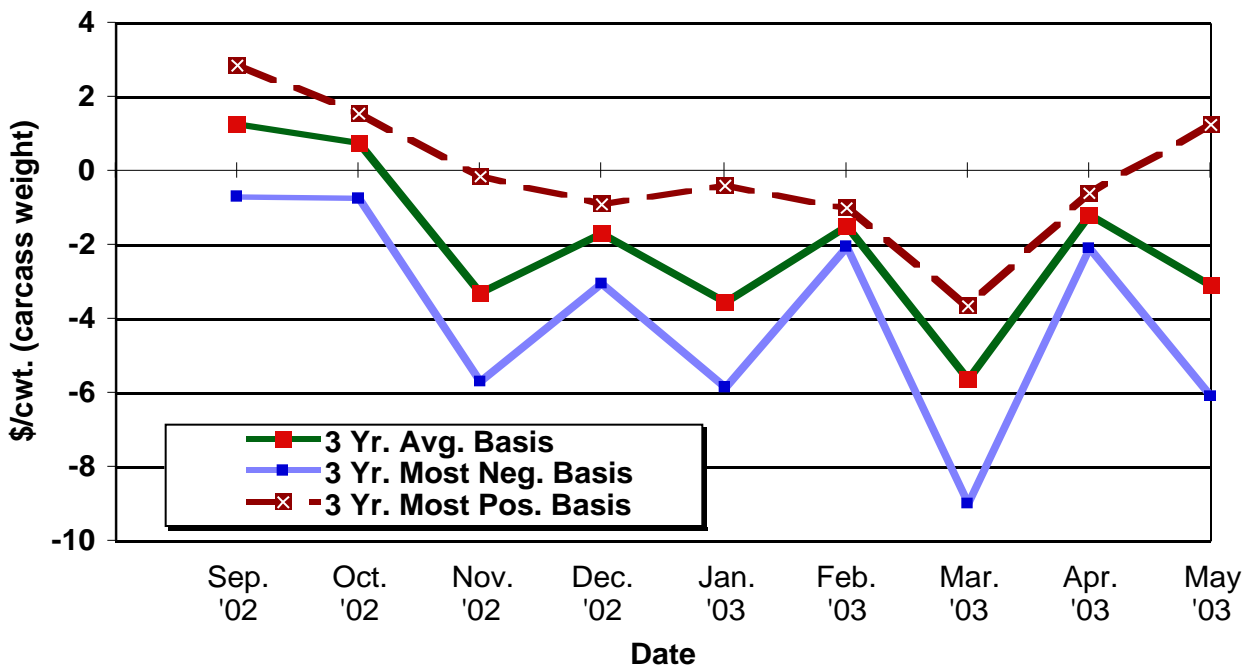
Fax: 785-532-6925

Futures Based W. Corn Belt 51-52% Lean Hog Price Forecasts



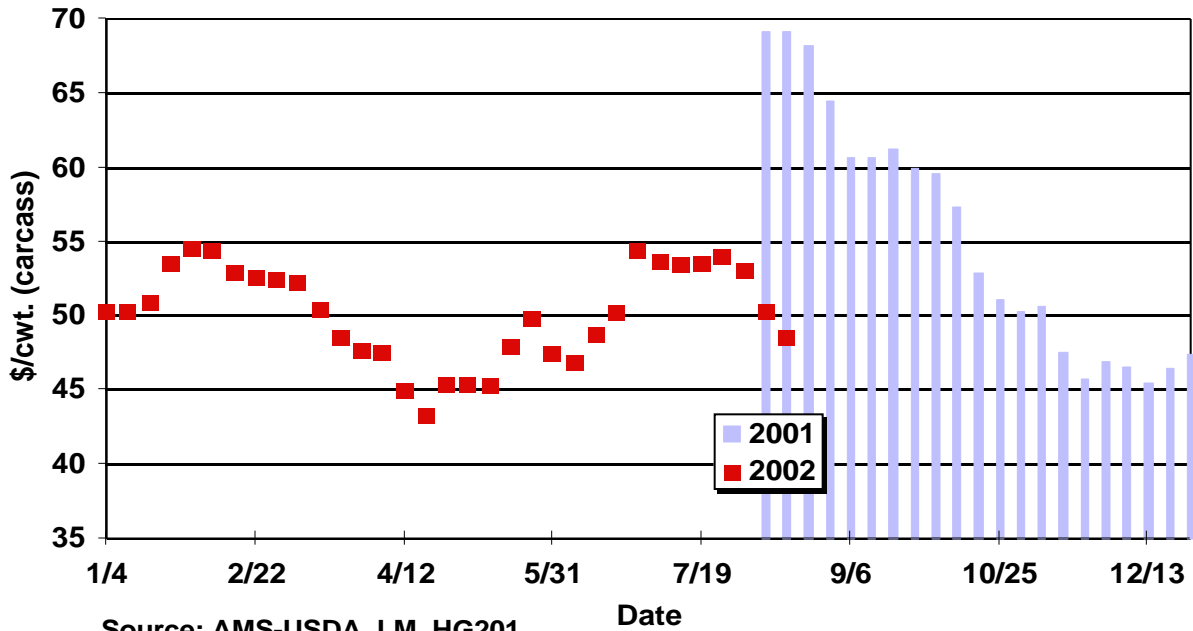
Source: CME & K-State Research & Extension
 Forecasts= Friday's Futures Price + Basis Forecasts

W. Corn Belt 51-52% Lean Hog Basis Forecasts



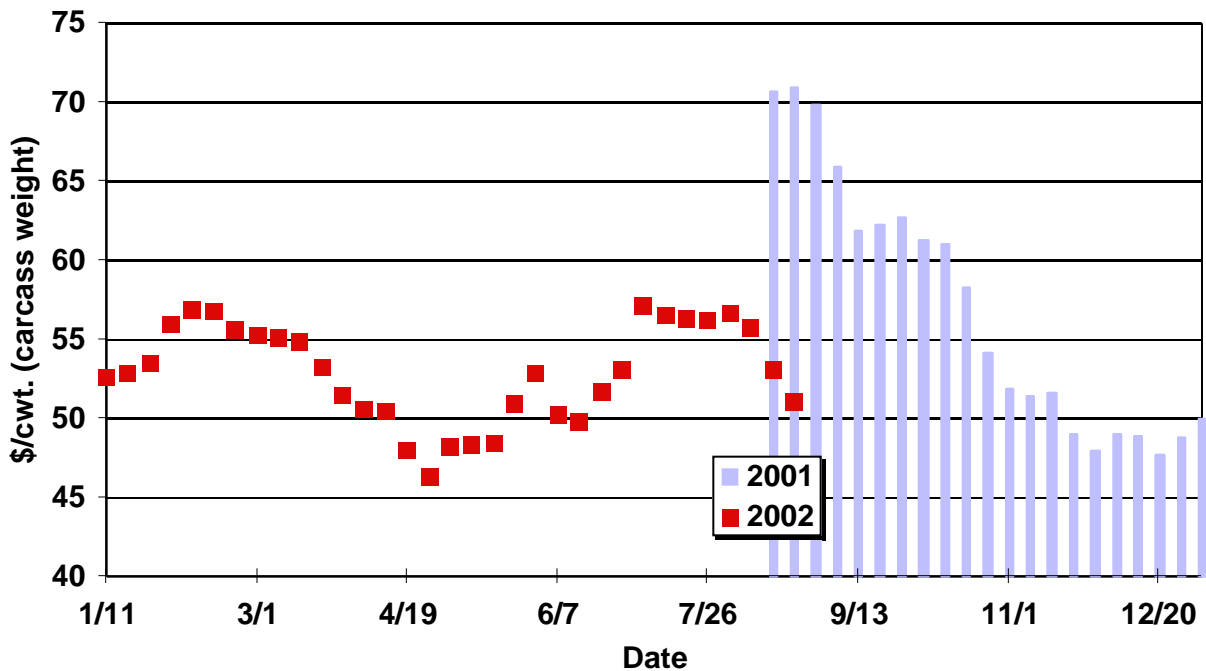
Source: AMS-USDA & K-State Research & Extension

National Base Hog Prices Weekly Average, Carcass Weight



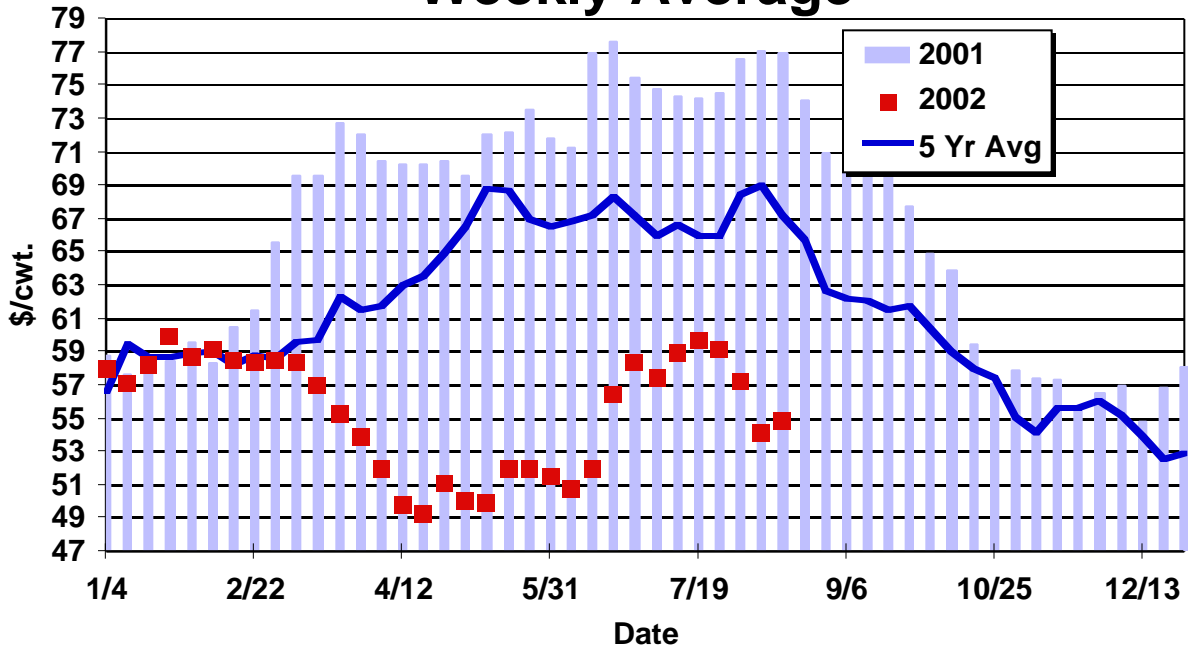
Source: AMS-USDA, LM_HG201
Data unavailable prior to week ending 8/10/01

National Net Hog Prices Weekly Average, Carcass Weight



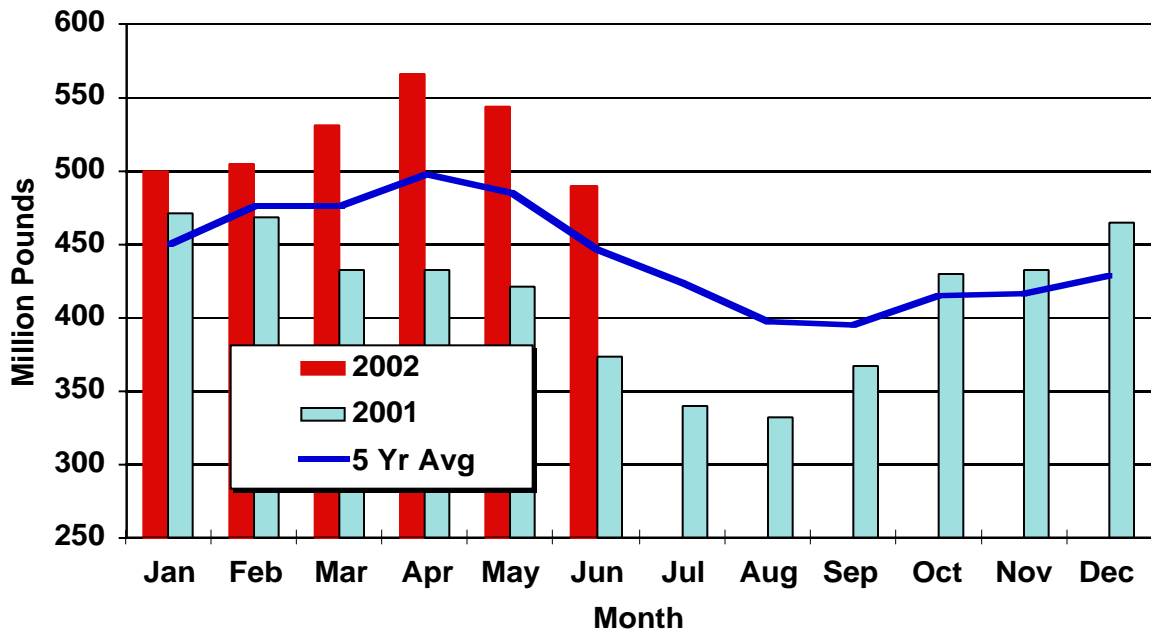
Source: AMS-USDA, LM_HG201
Data unavailable prior to week ending 8/10/01

U.S. Pork Cutout Value Weekly Average



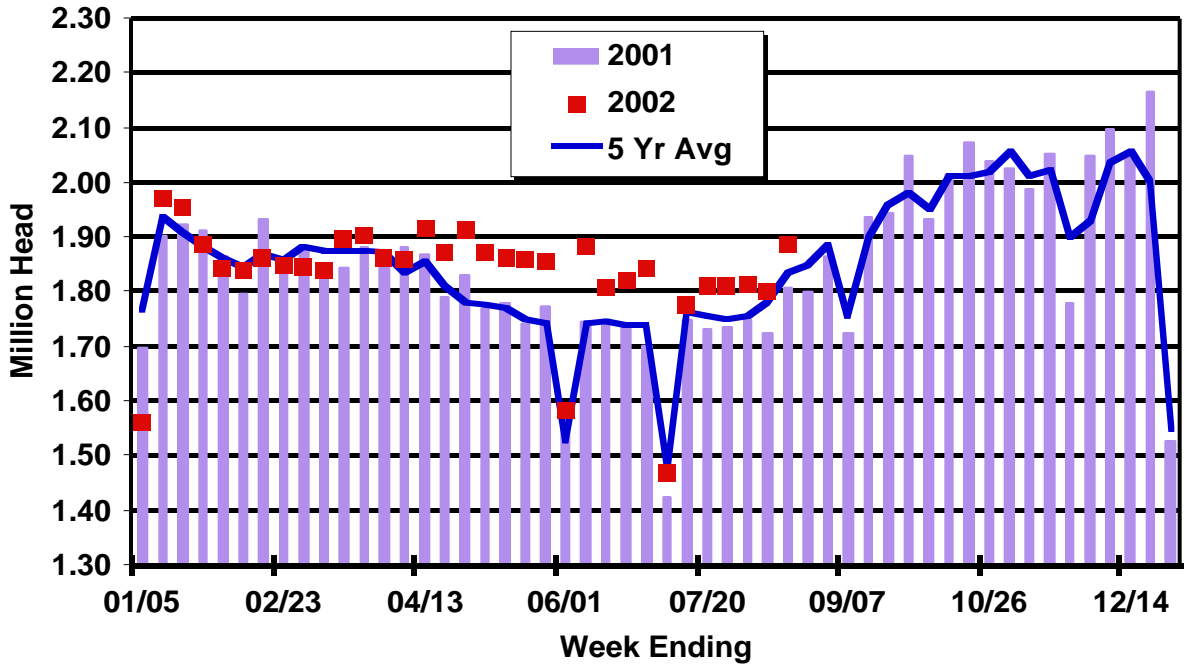
Source: AMS-USDA & K-State Research & Extension

Pork Cold Storage Stocks



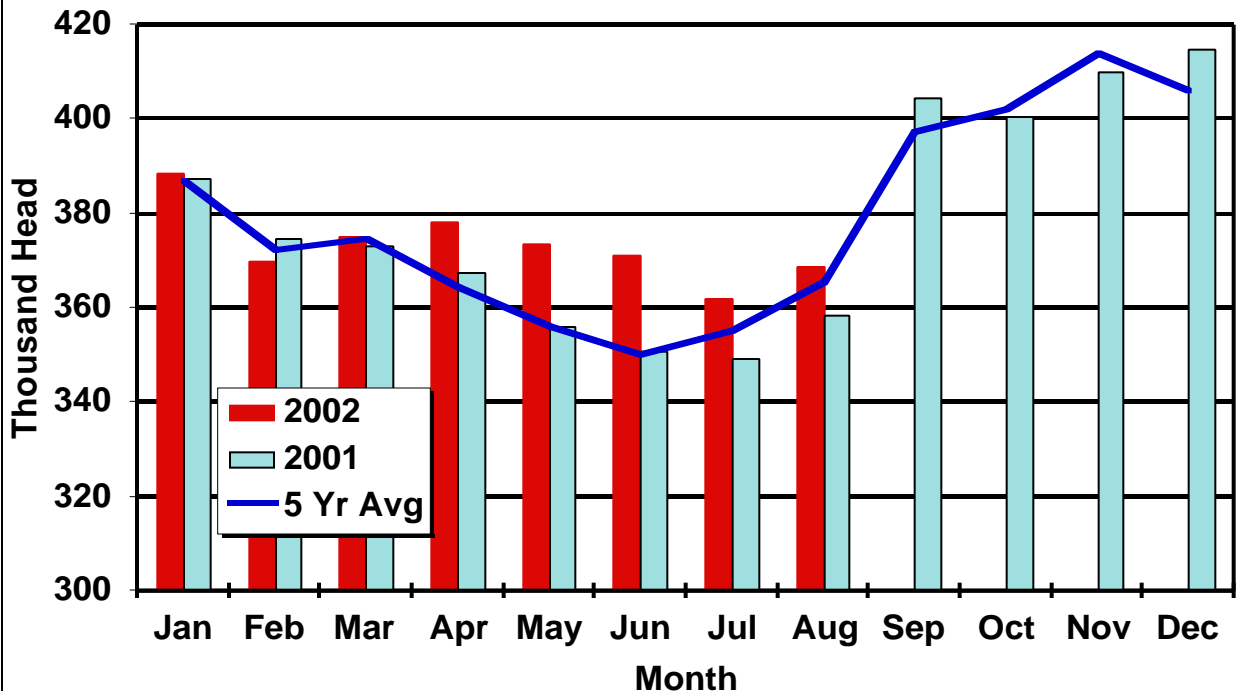
Source: USDA & KSU

Weekly F.I. Hog Slaughter



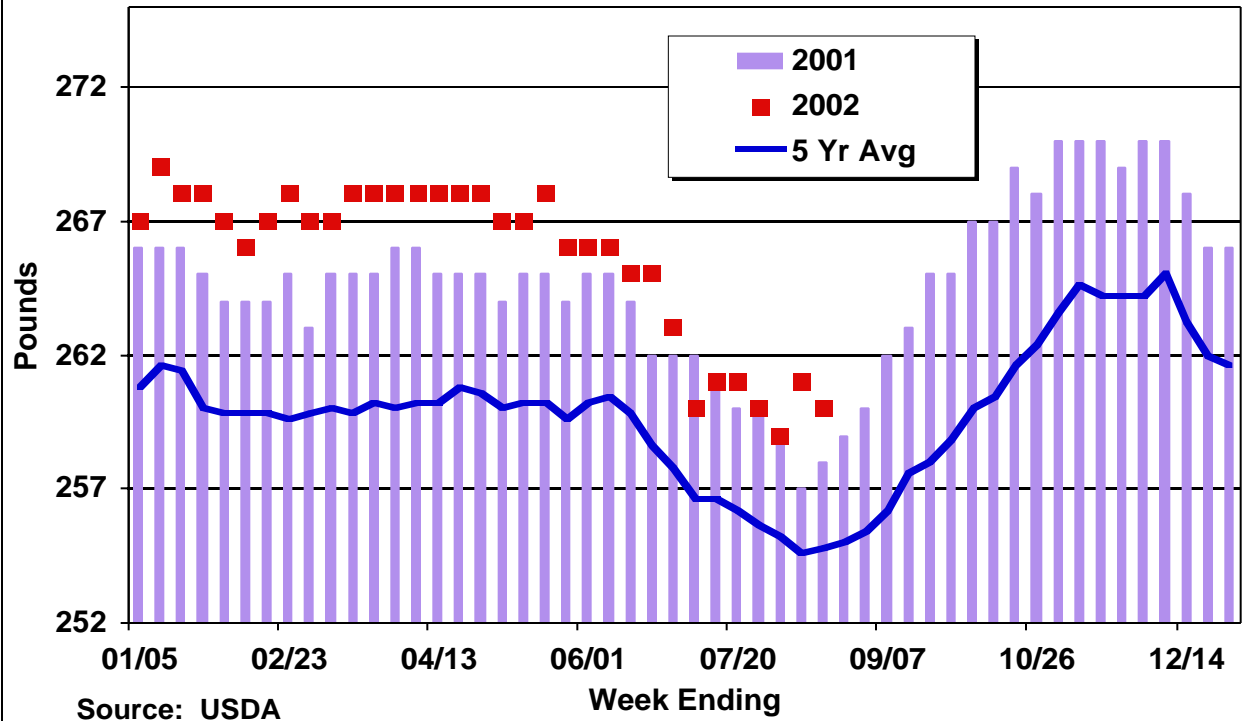
Source: USDA & K-State Research & Extension

Average Daily F.I. Hog Slaughter

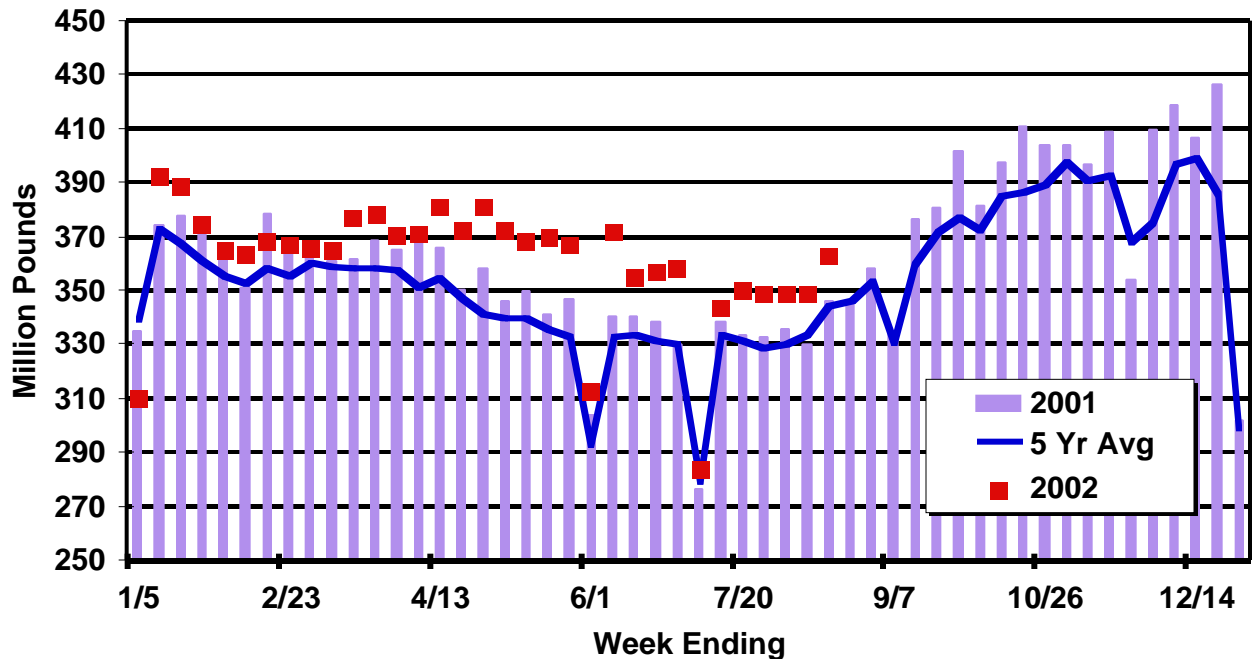


Source: USDA & K-State Research & Extension

Weekly F.I. Hog Weight

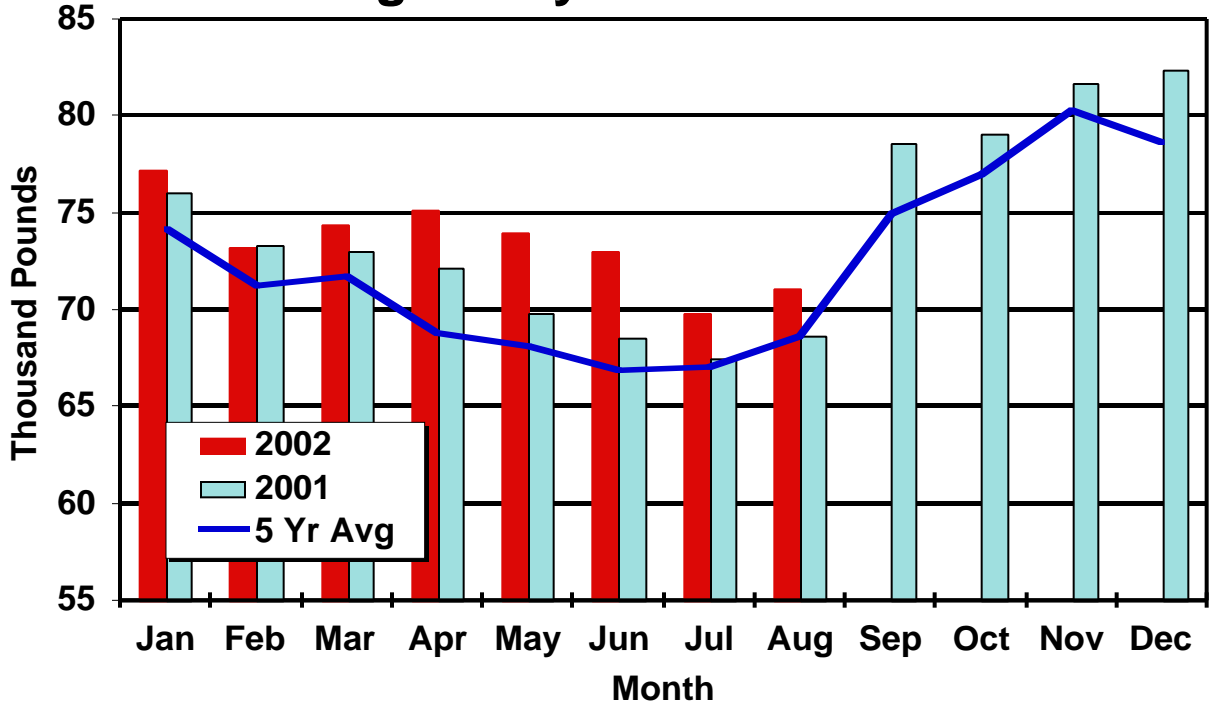


Weekly Pork Production



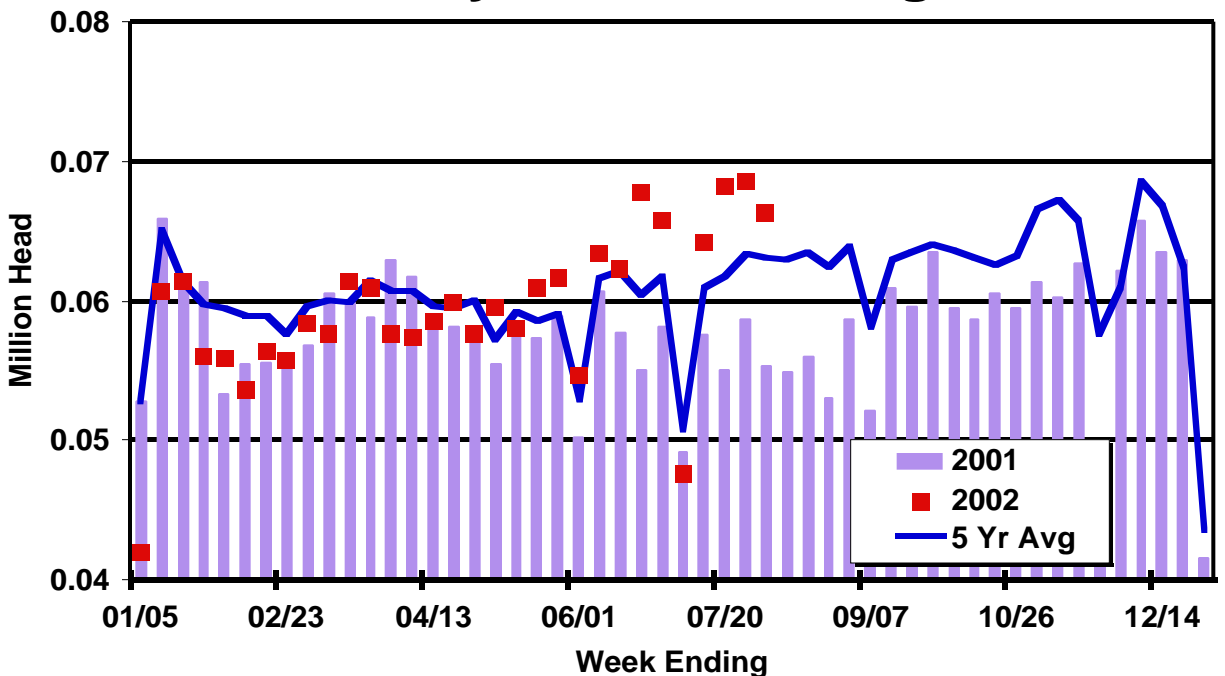
Source: USDA & K-State Research & Extension

Average Daily F.I. Pork Production



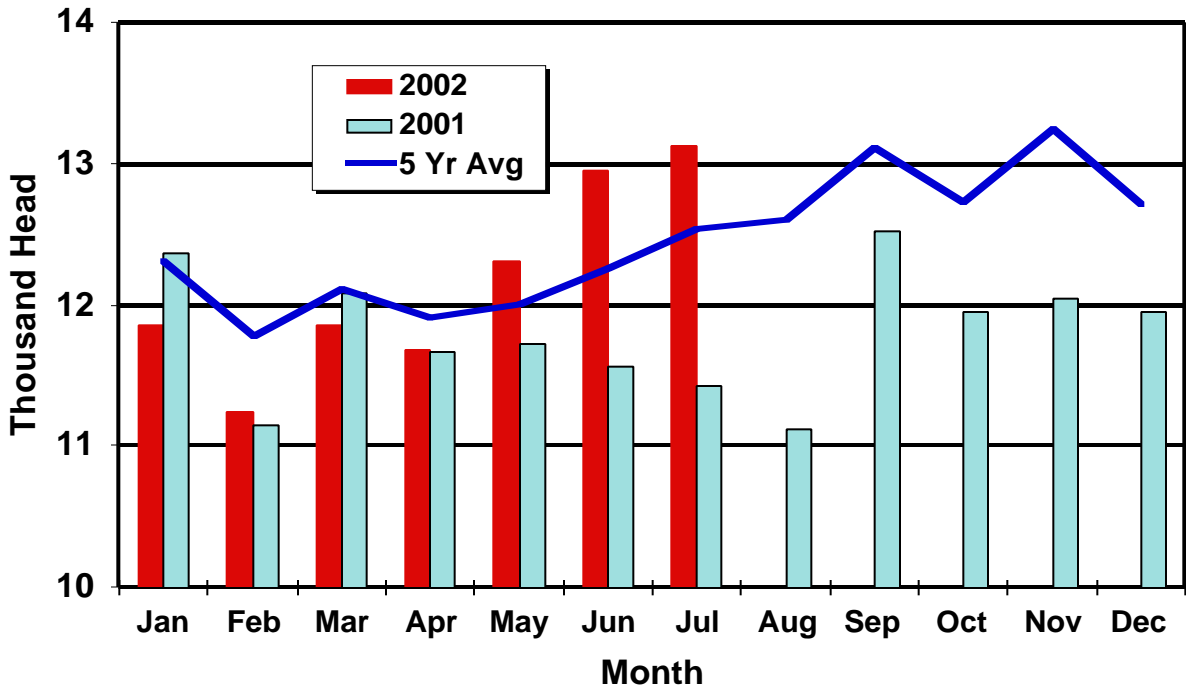
Source: USDA & K-State Research & Extension

Weekly F.I. Sow Slaughter



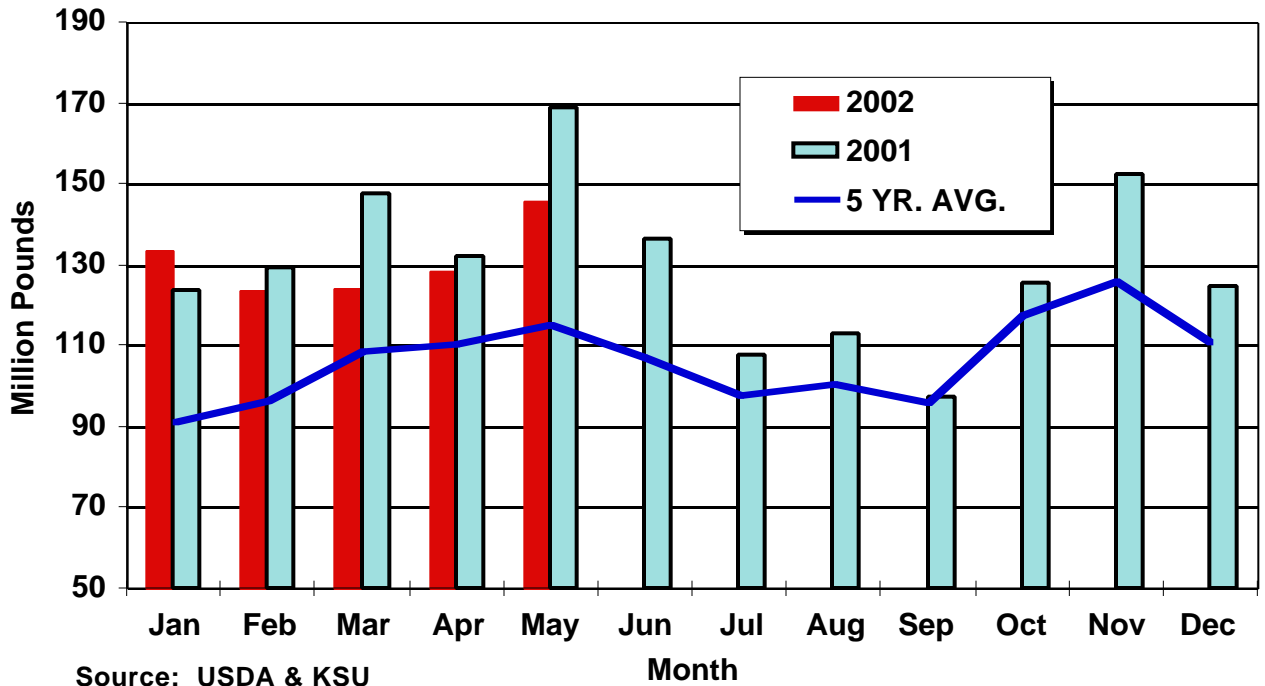
Source: USDA & K-State Research & Extension

Average Daily F.I. Sow Slaughter



Source: USDA & K-State Research & Extension

U.S. Pork Exports



Source: USDA & KSU